



Quality Access Doors- FAST!

SUBMITTAL/TECHNICAL DATA SHEET

DESCRIPTIONS

Tapeable Access Panels (T.A.P) allow access to utilities within ceilings while providing a seamless finish with the surrounding drywall.

There are no exposed hinges or fasteners, creating a nearly invisible access solution.

FEATURES

- Sleek, virtually invisible access panel
- Made from MDF (Medium Density Fiberboard)
- Installed during the drywall stage
- Taped into the drywall for a seamless finish
- Available in both ceiling and wall panels
- Frames available primed for easy install
- Panels can be made from moisture resistant MDF

SPECIFICATIONS

MATERIAL: MDF (Medium Density Fiberboard)

THICKNESS: 1/2" or 5/8"

APPROX WEIGHT 1/2" PANELS: 2.2 lbs/sq ft

APPROX WEIGHT 5/8" PANELS: 2.7 lbs/sq ft

FINISH: All Raw MDF OR Primed Frame and Raw MDF Panel

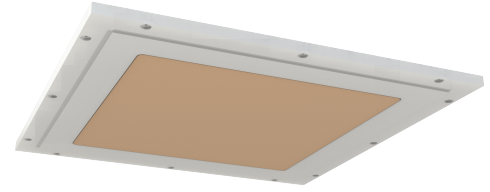
MAGNET TYPE (WALL PANELS ONLY): Neodymium (NdFeB)

PRIMER TYPE (PRIMED PANELS ONLY): Waterborne low-VOC primer

SKU: **BAG-TG58P**

TAPEABLE CEILING PANEL

FOR 5/8" DRYWALL PRIMED FRAME



■ DIMENSIONS AND APPEARANCE

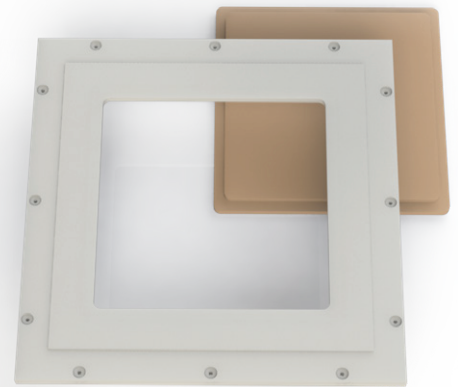
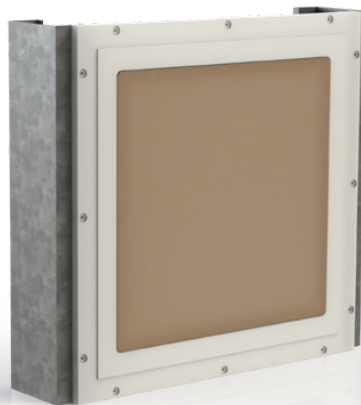
>> CLICK TO VIEW ADDITIONAL DETAILS AND PRICING <<

SIZE AVAILABLE:

| DOOR SIZE W x H | |
|-----------------|-----------|
| 6" x 6" | 16" x 16" |
| 8" x 8" | 18" x 18" |
| 10" x 10" | 20" x 20" |
| 12" x 12" | 24" x 24" |
| 14" x 14" | |

Custom Size Available on Request

For Detailed Specifications See Submittal Sheet



For a complete list of options visit www.BestAccessDoors.ca

■ PROJECT DATA

Custom Sizes Available - Fast!

Scan or Click



To view Pricing and Additional Product Info.

| PROJECT NAME : | QTY | W | H | OPTIONS |
|------------------------|--|---|---|---------|
| ARCHITECT : | | | | |
| DEALER : | | | | |
| CONTRACTOR : | | | | |
| LOCATION : | SPECIAL INSTRUCTIONS : | | | |
| DATE : | | | | |
| TAGGING INSTRUCTIONS : | SUBMITTAL APPROVAL : (signature or stamp) | | | |

TELEPHONE:
1-800-483-0823

FAX:
1-888-828-6021



385 WILSON STREET EAST,
SUITE 302
ANCASTER, ON, L9G 2C1
CANADA



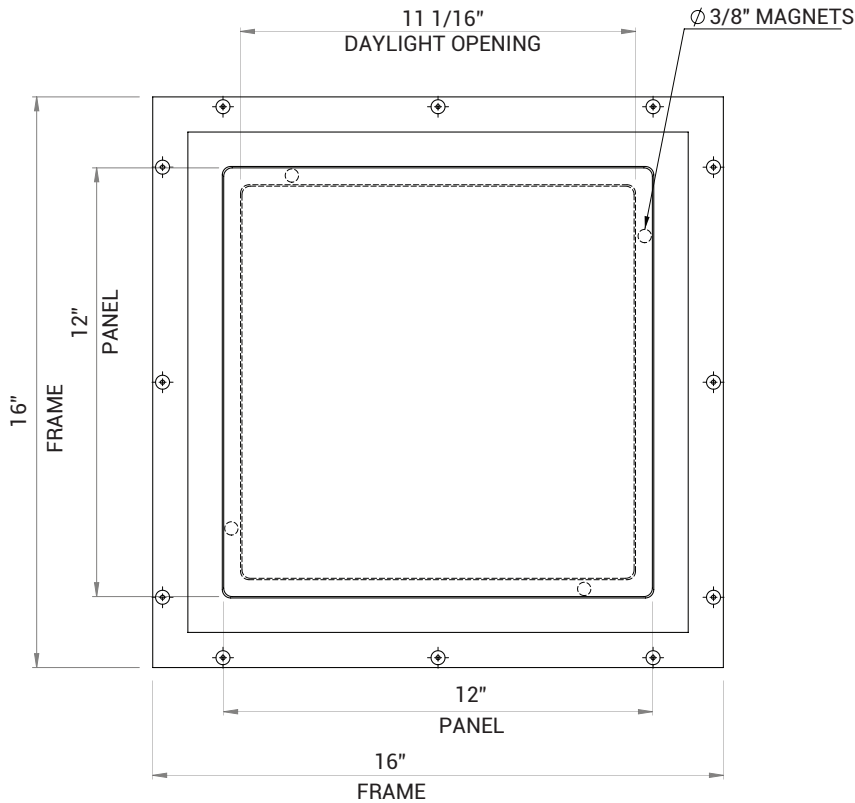
WEBSITE:
www.BestAccessDoors.ca

E-MAIL:
info@bestaccessdoors.ca

BAC-TC58P

TAPEABLE WALL PANEL FOR 5/8" DRYWALL PRIMED FRAME

STANDARD WALL PANEL DIMENSIONS:



NOTES:

- WHEN ORDERING USE "PANEL" SIZE, NOT FRAME SIZE. ALL SKUS ARE PANEL SIZES

- DRAWINGS SHOW A 1/2" PANEL, ALL DIMENSIONS EXCEPT FOR THICKNESS APPLY TO 5/8" PANELS

- DRAWINGS SHOW A 12" X 12" PANEL, THE DIFFERENCE FROM THE PANEL SIZE TO FRAME DIMENSION AND DAYLIGHT OPENING IS THE SAME FOR ALL PANEL SIZES

- ADDITIONAL SCREW HOLES AND MAGNETS ARE PROVIDED FOR LARGER PANEL SIZES

