



Quality Access Doors - FAST!

SUBMITTAL/TECHNICAL DATA SHEET

STANDARD OPTIONS

Tapeable Access Panels (T.A.P.) allow access to utilities within ceilings while providing a seamless finish with the surrounding drywall.

There are no exposed hinges or fasteners, creating a nearly invisible access solution.

FEATURES & BENEFITS

- Sleek, virtually invisible access panel
- Made from MDF (Medium Density Fiberboard)
- Installed during the drywall stage
- Taped into the drywall for a seamless finish
- Available in both ceiling and wall panels
- Frames available primed for easy install
- Panels can be made from moisture resistant MDF

SPECIFICATIONS

MATERIAL: MDF (Medium Density Fiberboard)

THICKNESS: 1/2" or 5/8"

APPROX WEIGHT 1/2" PANELS: 2.2 lbs/sq ft

APPROX WEIGHT 5/8" PANELS: 2.7 lbs/sq ft

FINISH: All Raw MDF OR Primed Frame and Raw MDF Panel

PRIMER TYPE (PRIMED PANELS ONLY): Waterborne low-VOC primer

SKU: **BAC-TC12**

TAP CEILING PANEL FOR 1/2" DRYWALL



DIMENSIONS AND APPEARANCE

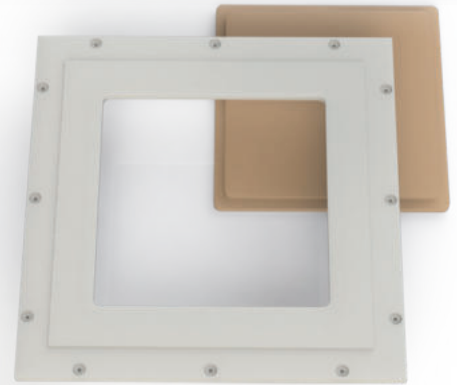
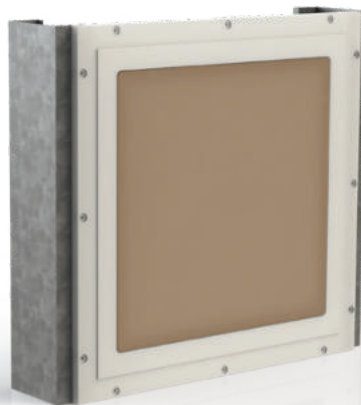
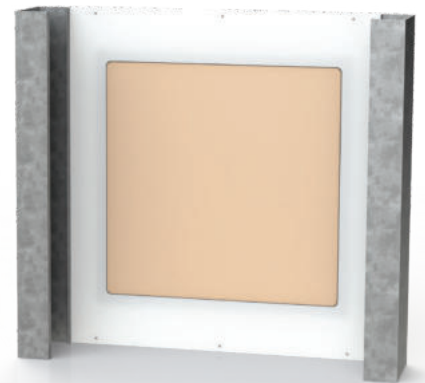
>> [CLICK TO VIEW ADDITIONAL DETAILS AND PRICING](#) <<

SIZE AVAILABLE:

DOOR SIZE W x H	
6" x 6"	16" x 16"
8" x 8"	18" x 18"
10" x 10"	20" x 20"
12" x 12"	24" x 24"
14" x 14"	

Custom Size Available on Request

For Detailed Specifications See Submittal Sheet



For a complete list of options visit www.BestAccessDoors.ca

PROJECT DATA

Custom Sizes Available - Fast!

Scan or Click



To view Pricing and Additional Product Info.

PROJECT NAME :	QTY	W	H	OPTIONS
ARCHITECT :				
DEALER :				
CONTRACTOR :				
LOCATION :	SPECIAL INSTRUCTIONS :			
DATE :	SUBMITTAL APPROVAL : (signature or stamp)			
TAGGING INSTRUCTIONS :				

TELEPHONE:
1-800-483-0823

FAX:
1-888-828-6021



385 WILSON STREET EAST,
SUITE 302
ANCASTER, ON, L9G 2C1
CANADA



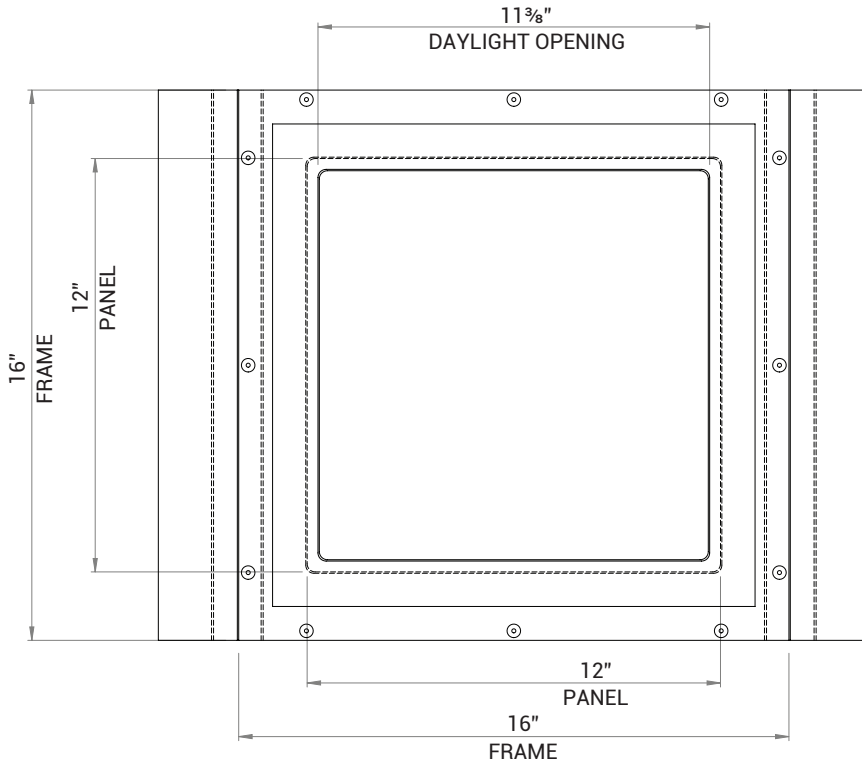
WEBSITE:
www.BestAccessDoors.ca

E-MAIL:
info@BestAccessDoors.ca

BAC-TC12

TAP CEILING PANEL FOR 1/2" DRYWALL

STANDARD CEILING PANEL DIMENSIONS:



NOTES:

- WHEN ORDERING USE "PANEL" SIZE, NOT FRAME SIZE. ALL SKUS ARE PANEL SIZES
- DRAWINGS SHOW A 1/2" PANEL, ALL DIMENSIONS EXCEPT FOR THICKNESS APPLY TO 5/8" PANELS
- DRAWINGS SHOW A 12" X 12" PANEL, THE DIFFERENCE FROM THE PANEL SIZE TO FRAME DIMENSION AND DAYLIGHT OPENING IS THE SAME FOR ALL PANEL SIZES
- ADDITIONAL SCREW HOLES AND MAGNETS ARE PROVIDED FOR LARGER PANEL SIZES

