

# BAC-SM

## TECHNICAL DATA SHEET



ALUMINUM SURFACE  
MOUNT FLOOR  
DOOR

SKU: **BAC-SM**



[CLICK TO VIEW PRICING](#)

### SPECIFICATIONS

1. 3" X 3" X 1/4" ALUMINUM ANGLE FRAME
2. 1/8" ALUMINUM DIAMOND PLATE COVER
3. GASKET (ALL AROUND COVER)
4. PINTLE HINGE (S/S)
5. SLAM LOCK W/ REMOVABLE HANDLE & COVER PLUG
6. HOLD OPEN ARM W/ RED VINYL GRIP
7. GUIDE ARM (IF REQ'D-DETERMINED BY SIZE)
8. GAS STRUT LIFTING MECHANISM (POWDER COATED)

### OPTIONS

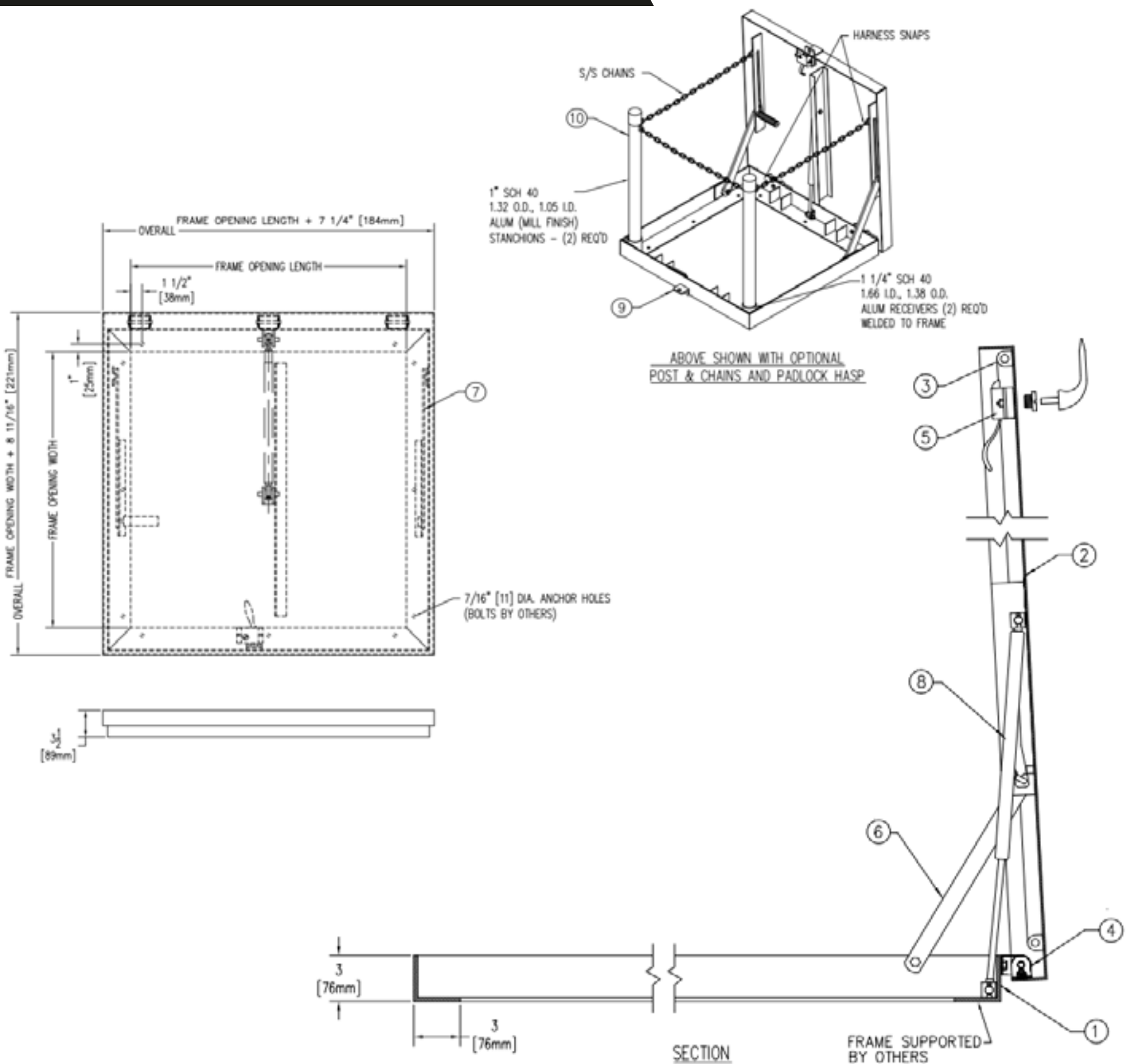
(SHOWN ON DRAWING FOR REFERENCE ONLY)

- ☐ 9. PADLOCK LUGS (Ø1/2" HOLE, PADLOCK BY OTHERS)
- ☐ 10. POSTS & CHAINS

SHOP FINISH:  
ALUMINUM: MILL FINISH  
HARDWARE: NON-CORROSIVE MATERIALS  
(UNLESS OTHERWISE SPECIFIED)

### INSTALLER NOTES:

FOLLOW MANUFACTURES INSTALLATION  
INSTRUCTIONS, TO BE SUPPLIED WITH UNITS



TOLL FREE PHONE:  
1-800-483-0823

[www.BestAccessDoors.ca](http://www.BestAccessDoors.ca)

WE ALSO DO  
**CUSTOM!**

Scan to view pricing.

