



Quality Access Doors- FAST!

SUBMITTAL/TECHNICAL DATA SHEET

SPECIFICATIONS

01. Heavy duty forged brass hinges with stainless steel pins.
02. Guide arm (If req'd)
03. 1-1/2" drain coupling
04. Standard slam lock
05. Automatic hold open arm with red vinyl grip
06. 3/8" Steel diamond pattern plate cover
07. 1/4" Steel channel frame with welded 1 1/4" x 1 1/4" anchor flange
08. Spring lifting mechanism

SHOP FINISH:

STEEL: Red oxide primer

HARDWARE: Non-corrosive materials
(Unless otherwise specified)

Reinforced for 200lbs. per sq. inch + 30% impact

This product may be installed on either a flat or sloping roof. When installed on a slope, the hinge side must run parallel with the slope. If slope exceeds 30°, advise factory for modification.

INSTALLER NOTES:

A. Use caution. Cover is spring loaded. Do not remove safety shipping bolt until unit is to be installed and in normal horizontal operating position.

B. Be sure unit is set on slight pitch toward drain corner.

C. Before anchoring in place open and close door. Check to see that the door in the closed position rests on the frame all around. If not, shim under the frame at the proper corner.

D. Do not reduce 1 1/2" drain pipe to dry well or disposal system.

E. Bend down anchors if required

SKU: **BAG-HLC**

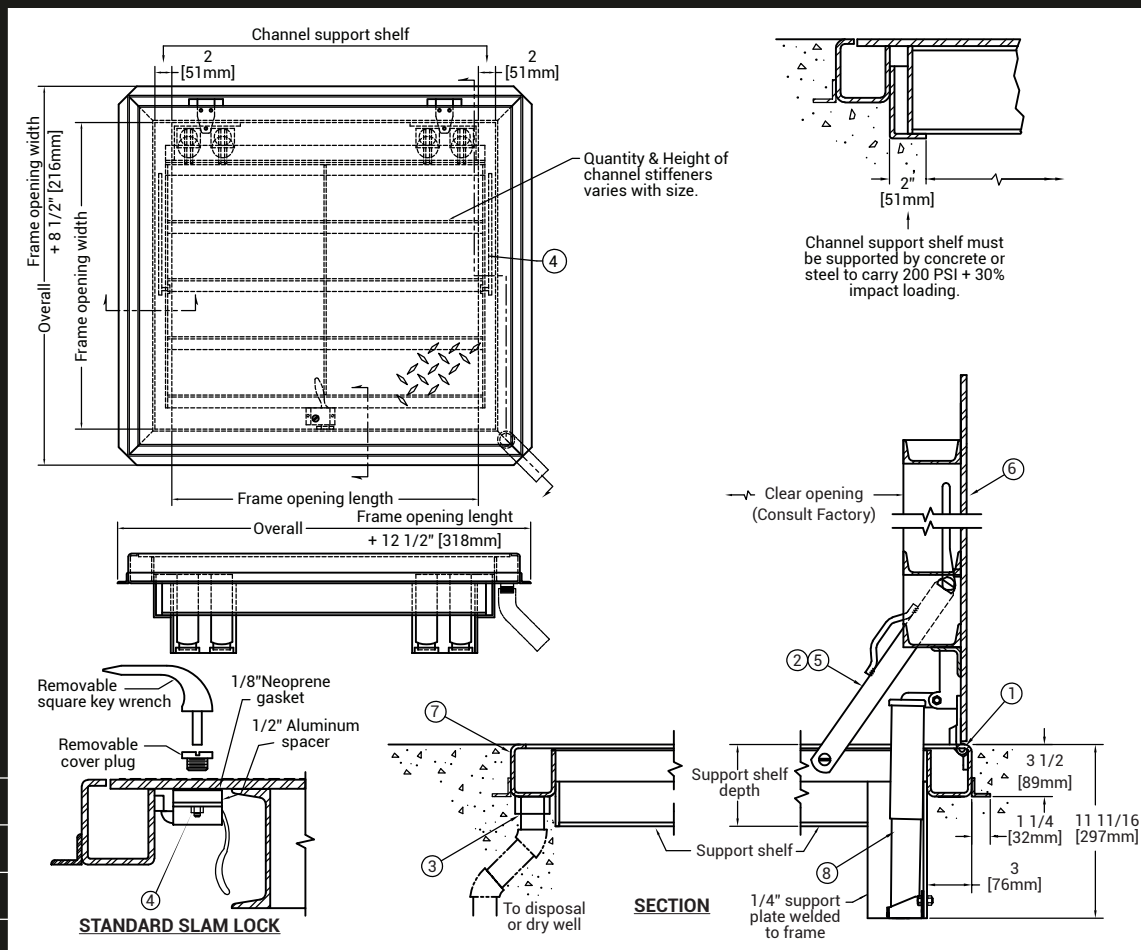
SINGLE LEAF ACCESS DOOR

EXTERIOR - TYPE HLC



DIMENSIONS AND APPEARANCE

>> CLICK TO VIEW ADDITIONAL DETAILS AND PRICING <<



For a complete list of options visit www.BestAccessDoors.ca

QTY	TYPE	SIZE (INCHES) WIDTH X LENGTH	SELF DEPTH
	HLC-1	2'-0" X 2'-0" [610mm] x [610mm]	6 5/8" [168mm]
	HLC-2	2'-6" X 2'-6" [762mm] x [762mm]	7 5/8" [194mm]
	HLC-3	3'-0" X 2'-6" [914mm] x [762mm]	7 5/8" [194mm]
	HLC-4	3'-0" X 3'-0" [914mm] x [914mm]	8 5/8" [219mm]

Scan or Click



To view Pricing and Additional Product Info.

PROJECT DATA

Custom Sizes Available - Fast!

PROJECT NAME :	QTY	W	H	OPTIONS
ARCHITECT :				
DEALER :				
CONTRACTOR :				
LOCATION :	SPECIAL INSTRUCTIONS :			
DATE :				
TAGGING INSTRUCTIONS :	SUBMITTAL APPROVAL : (signature or stamp)			

TELEPHONE:
1-800-483-0823

FAX:
1-888-828-6021

385 WILSON STREET EAST,
SUITE 302
ANCASTER, ON, L9G 2C1
CANADA

WEBSITE:
www.BestAccessDoors.ca

E-MAIL:
info@bestaccessdoors.ca