



Quality Access Doors- FAST!

SUBMITTAL/TECHNICAL DATA SHEET

APPLICATION

Designed for interior and exterior floodtight applications where water may rise above the surface opening

FEATURES

- Angle frame construction with 4" high horizontal leg to allow for bolting to concrete
- Diamond plate door panel is reinforced for a live load of 625 pounds/sq ft. (capable of holding up to 10 ft. head of water)
- Door panel overlaps frame, compressing the gasket providing a floodtight fit
- U shaped neoprene gasket and stainless steel pressure lock system ensure the door will not leak

SPECIFICATIONS

MATERIAL: Aluminum door & frame ; Type 316 Stainless steel hinges & hardware

DOOR: 1/4" aluminum diamond plate reinforced for live load of 625 pounds/per sq. ft. (capable of holding up to 10 ft. head of water)

HINGE: Type 316 stainless steel butt hinges with tamper proof stainless steel bolts and nuts

GASKET: 3/8" neoprene gasket

OPENING DEVICE: Automatic hold open arm with red vinyl grip allows door to open to 90 degrees, locking door in open position and allowing for easy control when closing door panel. Stainless steel compression springs provide lift assistance. Available with electrical actuators, operated by wall mounted push button switch, and remote control

STANDARD LATCH: Type 316 stainless steel pressurelock system and exterior staple for padlock

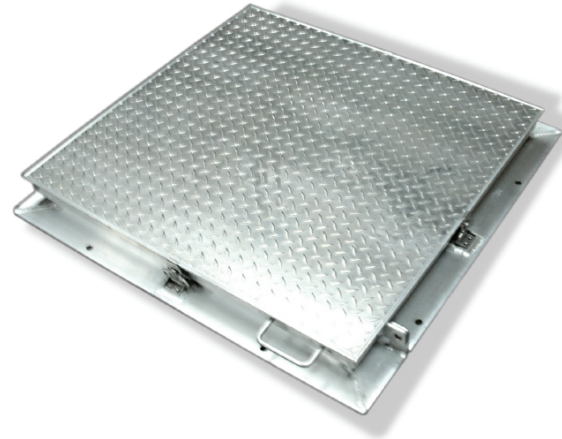
FINISH: Mill finish

For a complete list of options visit www.BestAccessDoors.ca

SKU: **BAC-FTFD**

FLOOR HATCH

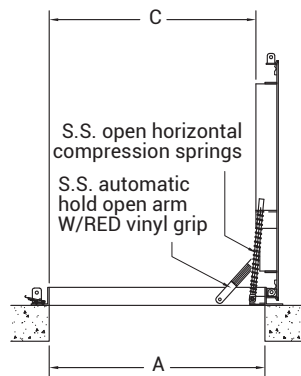
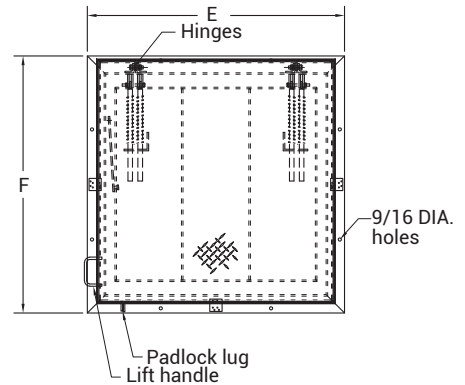
FLOOD TIGHT



DIMENSIONS AND APPEARANCE

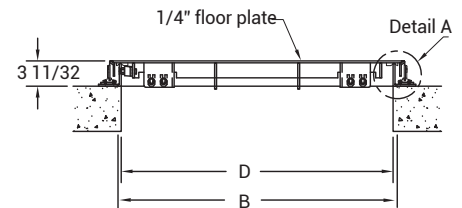
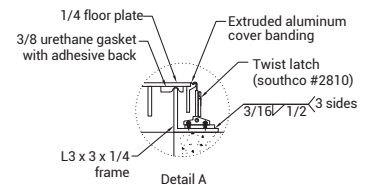
>> CLICK TO VIEW ADDITIONAL DETAILS AND PRICING <<

| DOOR SIZE W x H INCHES (MM) | WEIGHT | |
|--------------------------------|--------|----|
| | LBS | KG |
| 24 x 24 (610 x 610) | 65 | 29 |
| 30 x 30 (762 x 762) | 85 | 39 |
| 30 x 48 (762 x 1219) | 110 | 50 |
| 36 x 36 (914 x 914) | 105 | 48 |
| 36 x 48 (914 x 1219) | 120 | 54 |



NOTES:

- MATERIAL: ALUMINUM
- LOADING: 625 LBS. PER SQ. FT.
- 316 STAINLESS STEEL BOLTS & NUTS
- AREA OF FRAME IN CONTACT WITH CONCRETE TO BE PAINTED WITH BITUMINOUS COATING



For detailed specifications see submittal sheet

MANUFACTURED BY ACUDOR

PROJECT DATA

Custom Sizes Available - Fast!

Scan or Click



| PROJECT NAME : | QTY | W | H | OPTIONS |
|------------------------|--|---|---|---------|
| ARCHITECT : | | | | |
| DEALER : | | | | |
| CONTRACTOR : | | | | |
| LOCATION : | SPECIAL INSTRUCTIONS : | | | |
| DATE : | | | | |
| TAGGING INSTRUCTIONS : | SUBMITTAL APPROVAL : (signature or stamp) | | | |

TELEPHONE:
1-800-483-0823
FAX:
1-888-828-6021

385 WILSON STREET EAST,
SUITE 302
ANCASTER, ON, L9G 2C1
CANADA



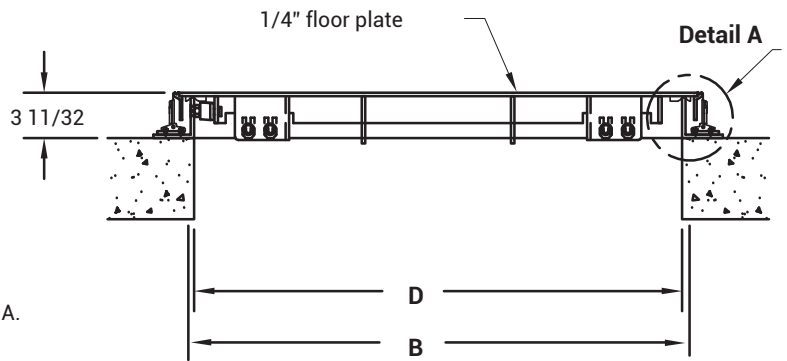
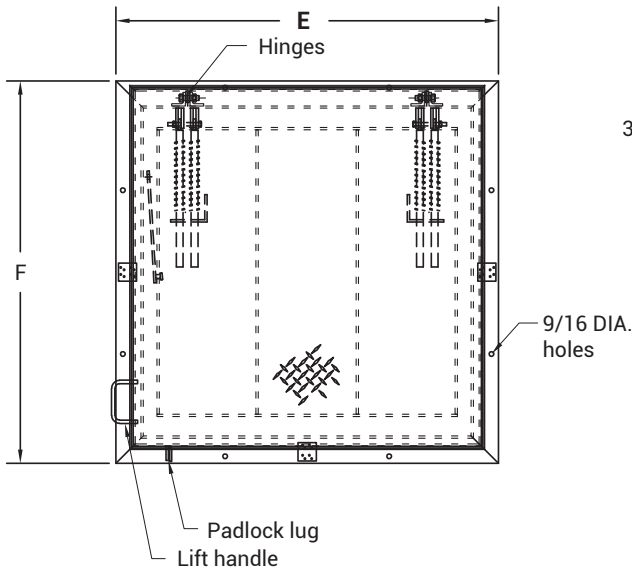
WEBSITE:
www.BestAccessDoors.ca
E-MAIL:
info@bestaccessdoors.ca

To view Pricing and Additional Product Info.

BAC-FTFD

**ANGLE FRAME FLOOR HATCH
RAISED FRAME - FLOOD TIGHT**

| NOMINAL DOOR SIZE | FRAME OPENING | | CLEAR OPENING | | OVERALL SIZE | | WEIGHT |
|----------------------|---------------|------------|---------------|------------|--------------|------------|-----------|
| in. (mm) | A in. (mm) | B in. (mm) | C in. (mm) | D in. (mm) | E in. (mm) | F in. (mm) | LBS. (KG) |
| 24 x 24 (610 x 610) | 24 (610) | 24 (610) | 24 (610) | 23 (584) | 30 (762) | 30 (762) | 65 (29) |
| 30 x 30 (762 x 762) | 30 (762) | 30 (762) | 30 (762) | 29 (737) | 36 (914) | 36 (914) | 85 (39) |
| 30 x 48 (762 x 1219) | 30 (762) | 48 (1219) | 48 (1219) | 47 (1194) | 36 (914) | 54 (1372) | 110 (50) |
| 36 x 36 (914 x 914) | 36 (914) | 36 (914) | 36 (914) | 35 (889) | 42 (1067) | 42 (1067) | 105 (48) |
| 36 x 48 (914 x 1219) | 36 (914) | 48 (1219) | 48 (1219) | 47 (1194) | 42 (1067) | 54 (1372) | 120 (54) |



NOTES:

- MATERIAL: ALUMINUM
- LOADING: 625 LBS. PER SQ. FT.
- 316 STAINLESS STEEL BOLTS & NUTS
- AREA OF FRAME IN CONTACT WITH CONCRETE TO BE PAINTED WITH BITUMINOUS COATING

