



Quality Access Doors- FAST!

STANDARD OPTIONS

MATERIAL:

16 gauge cold rolled steel frame &
20 gauge galvalume steel door

HINGE:

Continuous piano hinge

INSULATION:

Mineral wool

LOCK / LATCH:

Self latching tool-key operated slam
latch and/or ring operated slam
latch, both included

INSIDE PANEL RELEASE:

Standard on all doors over 12" x 12"

AUTOMATIC PANEL CLOSER:

Standard on all doors

FINISH:

High quality white powder coat
primer

PACKAGING:

Individually wrapped, 1 per box

OPTIONS AVAILABLE

LOCK / LATCH:

- Mortise deadbolt lock
- Hex head slam latch
- Handle operated slam latch
- Mortise preparation for cylinder (cylinder optional)

MATERIAL:



Stainless steel #4 (brushed finish)

MASONRY ANCHOR:

Available on all sizes

Fire Rating information on Page 2

For a complete list of options visit
www.BestAccessDoors.ca

Scan  or  Click



To view Pricing and
Additional Product Info.

LEED READY: THIS PRODUCT
CONTRIBUTES TO LEED® CREDITS



SUBMITTAL/TECHNICAL DATA SHEET

SKU: **BAG-FRI-PF**

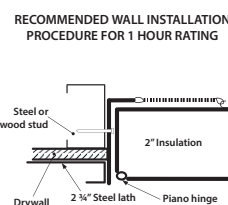
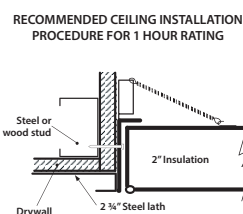
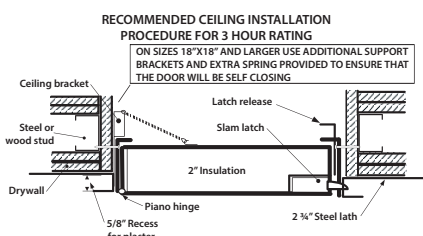
FIRE RATED ACCESS PANEL INSULATED

WITH PLASTER FLANGE



INSTALLATION

>> CLICK TO VIEW ADDITIONAL DETAILS AND PRICING <<

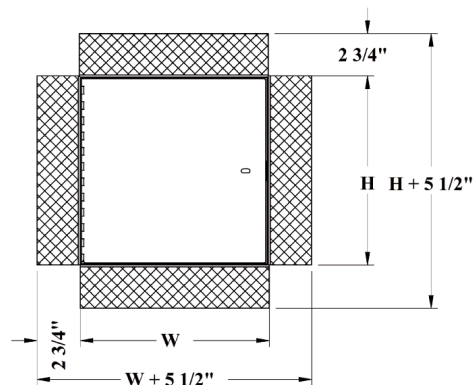


Authorities Having
Jurisdiction (AHJ) should
be consulted in all cases
as to the particular
requirements covering
the installation and use
of fire rated access doors.

DIMENSIONS AND APPEARANCE

STANDARD SIZES:

DOOR SIZE W x H INCHES (MM)	NUMBER OF LOCKS	WEIGHT LBS KG
8 x 8 (203 x 203)	1	7 3.2
10 x 10 (254 x 254)	1	8 3.6
12 x 12 (304 x 304)	1	10 4.5
14 x 14 (355 x 355)	1	12 5.4
16 x 16 (406 x 406)	1	14 6.4
18 x 18 (457 x 457)	1	17 7.7
22 x 22 (558 x 558)	1	20 9.1
22 x 30 (558 x 762)	1	30 13.6
22 x 36 (558 x 914)	2	34 15.5
24 x 24 (609 x 609)	1	24 10.9
24 x 36 (609 x 914)	2	36 16.4
* 24 x 48 (609 x 1219)	2	68 30.9
* 30 x 30 (762 x 762)	1	41 18.6
* 32 x 32 (812 x 812)	2	43 19.5
* 36 x 36 (914 x 914)	2	50 22.7
* 48 x 48 (1219 x 1219)	2	83 37.7



ROUGH WALL OPENING IS DOOR SIZE + 1/4" OR + 6MM

* Not available for ceiling rating (maximum 24"x36")

PROJECT DATA

Custom Sizes Available - Fast!

PROJECT NAME :	QTY	W	H	OPTIONS
ARCHITECT :				
DEALER :				
CONTRACTOR :				
LOCATION :	SPECIAL INSTRUCTIONS :			
DATE :				
TAGGING INSTRUCTIONS :	SUBMITTAL APPROVAL : (signature or stamp)			

TELEPHONE:
1-800-483-0823
FAX:
1-888-828-6021

385 WILSON STREET EAST,
SUITE 302
ANCASTER, ON, L9G 2C1
CANADA

WEBSITE:
www.BestAccessDoors.ca
E-MAIL:
info@bestaccessdoors.ca



■ FIRE RATING

FOR INSTALLATION IN VERTICAL WALL ASSEMBLIES:

CERTIFIED TO STANDARDS: UBC 7-2 (1997), UL 10B (1997), UL 10B (2009), NFPA 252 (2003), NFPA 252 (2008), NFPA 252 (2012), CAN/ULC S104 (R1985), CAN/ULC S104 (2010).
RATING ACHIEVED: 3 hours, neutral/negative pressure.
MAXIMUM SIZE: 48" wide x 48" high (1219 mm x 1219 mm).
Maximum area of 2304 in²

Tolerance on height and width limitation is $\pm 3"$ (76 mm) as long as the area does not exceed 2304 in²

TEMPERATURE RISE: 250°F (121°C) after 30 min. 450°F (232°C) after 60 min.

FOR INSTALLATION IN HORIZONTAL CEILING ASSEMBLIES:

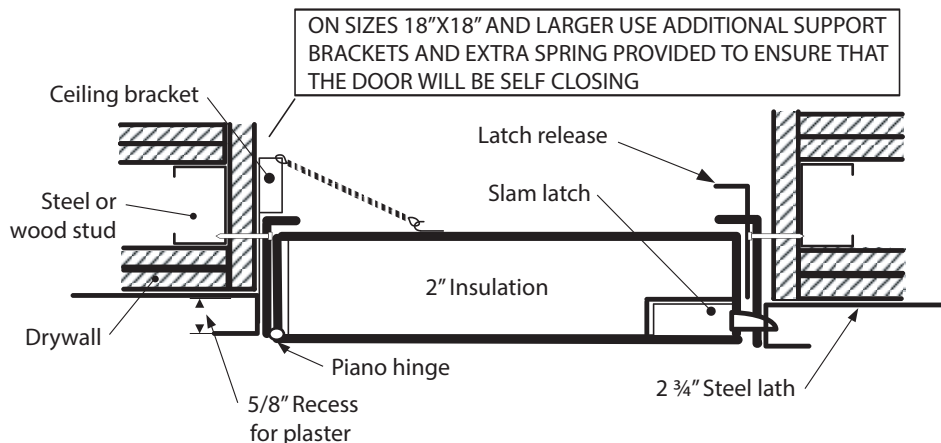
CERTIFIED TO STANDARDS: ASTM E119 (2012), CAN/ULC S101 (2007).
RATING ACHIEVED: 3 hours in non-combustible construction. 1 hour in combustible construction.
MAXIMUM SIZE: 24" x 36" (hinges & latch on 36" long sides) (610 mm x 914 mm).

Tolerances on dimension limitations are $\pm 3"$ (76 mm) as long as the area does not exceed 864 in²

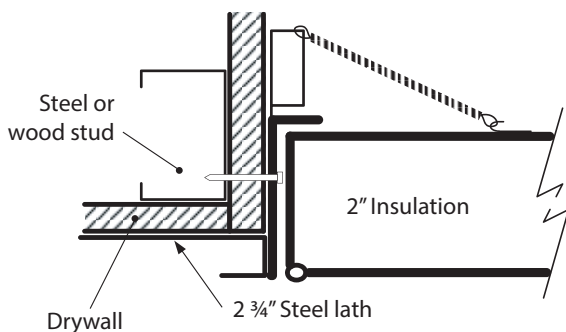
TEMPERATURE RISE: Not applicable.

■ INSTALLATION: WALLS AND CEILINGS

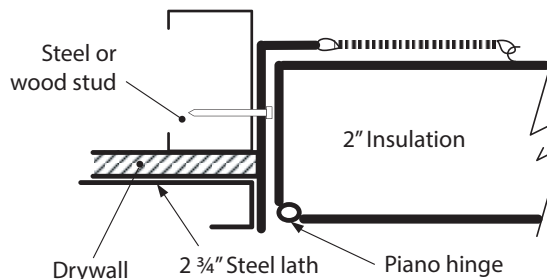
RECOMMENDED CEILING INSTALLATION PROCEDURE FOR 3 HOUR RATING



RECOMMENDED CEILING INSTALLATION PROCEDURE FOR 1 HOUR RATING



RECOMMENDED WALL INSTALLATION PROCEDURE FOR 1 HOUR RATING



Authorities Having Jurisdiction (AHJ) should be consulted in all cases as to the particular requirements covering the installation and use of fire rated access doors.



TELEPHONE:
1-800-483-0823
FAX:
1-888-828-6021



385 WILSON STREET EAST,
SUITE 302
ANCASTER, ON, L9G 2C1
CANADA



WEBSITE:
www.BestAccessDoors.ca
E-MAIL:
info@BestAccessDoors.ca