



Quality Access Doors - FAST!

SUBMITTAL/TECHNICAL DATA SHEET

SPECIFICATIONS

01. Frame with capflashing (corners full welded)
F-50 - 11 gauge aluminum
02. Pintle hinge
03. Gasket (All around cover)
04. Cover gauge
E-50 - 11 gauge aluminum
05. Cover liner
E-50 - 18 gauge aluminum
06. Spring lifting mechanism
07. 1" Rigid fiberboard insulation
08. Slam latch
09. Inside and outside handles with padlock hasps
10. Arm guide bracket
11. 1" Thick fiberglass cover insulation
12. Heavy duty hold open ARM with Red vinyl grip
13. Neoprene gasket
14. Lock strike & padlock hasp
15. Bilclip® flashing system
16. Guide ARM

SHOP FINISH:

STEEL: red oxide primer

ALUMINUM: mill finish

HARDWARE: non-corrosive materials
(Unless otherwise specified)

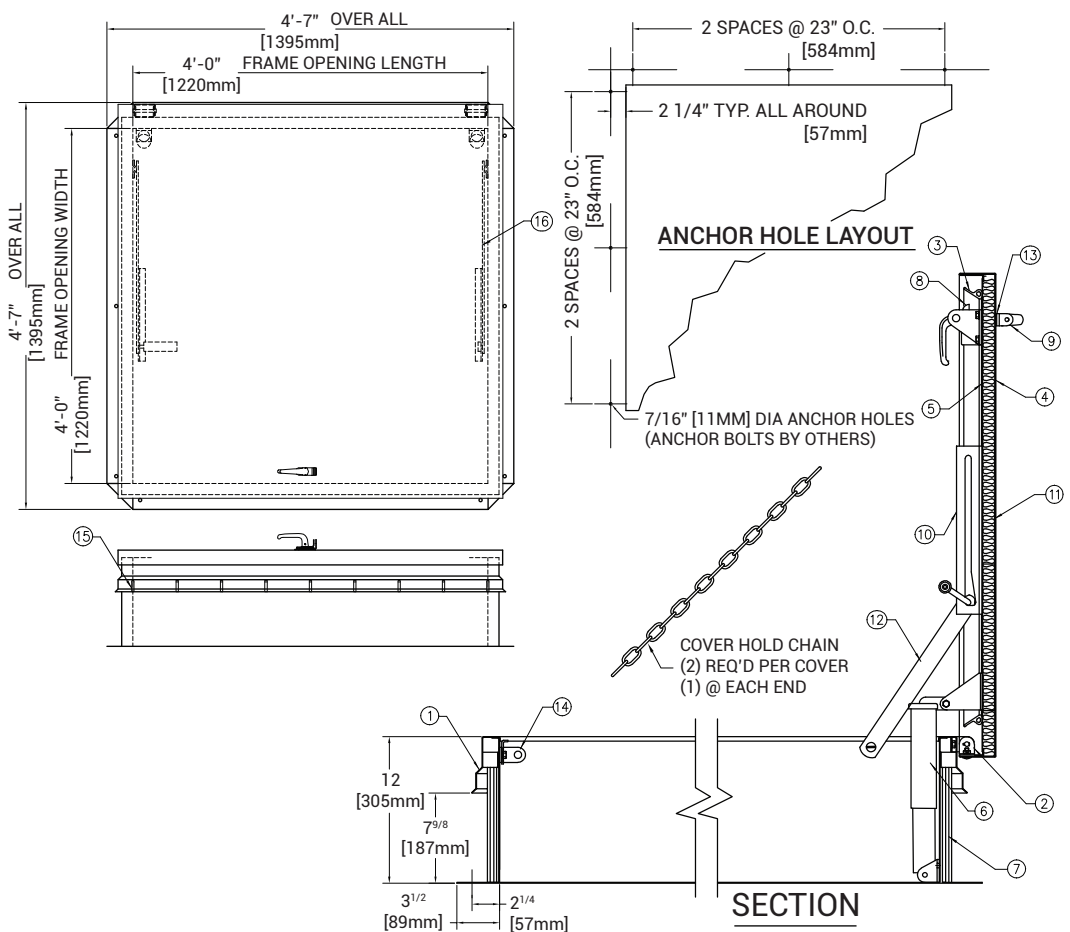
This product may be installed on either a flat or sloping roof. When installed on a slope, the hinge side must run parallel with the slope. If slope exceeds 30°, advise factory for modification.

SKU: BA-F-50HZ SINGLE LEAF ROOF ACCESS HATCH - TYPE F



■ DIMENSIONS AND APPEARANCE

>> CLICK TO VIEW ADDITIONAL DETAILS AND PRICING <<



For a complete list of options visit www.BestAccessDoors.ca

QTY TYPE MATERIAL

■ F-50 ALUM. COVER/ALUM. FRAME

TYPE F SIZE 4'-0" X 4'-0" (WIDTH X LENGTH)

■ PROJECT DATA

Custom Sizes Available - Fast!

PROJECT NAME :	QTY	W	H	OPTIONS
ARCHITECT :				
DEALER :				
CONTRACTOR :				
LOCATION :	SPECIAL INSTRUCTIONS :			
DATE :				
TAGGING INSTRUCTIONS :	SUBMITTAL APPROVAL : (signature or stamp)			

Scan or Click



BEST ACCESS DOORS

To view Pricing and Additional Product Info.

TELEPHONE:
1-800-483-0823
FAX:
1-888-828-6021

385 WILSON STREET EAST,
SUITE 302
ANCASTER, ON, L9G 2C1
CANADA

WEBSITE:
www.BestAccessDoors.ca
E-MAIL:
info@bestaccessdoors.ca