



Quality Access Doors- FAST!

SUBMITTAL/TECHNICAL DATA SHEET

DESCRIPTION

The non-drainable pedestrian floor door is designed for standard-duty load and provides a flush installation for new concrete applications. Ideal use for utility and general building applications where water infiltration is not a concern.

FEATURES

- Pedestrian Load.
- Diamond Tread Plate.
- C-Channel Frame

SPECIFICATIONS

LOAD: 300psf live load

DOOR: Single or Double Leaf

MATERIAL: Aluminum: 1/4 inch, mill finish, gray primer on exterior frame (for cast-in only)

COVER: Diamond tread plate.

FRAME: C-Channel.

INSTALLATION: Cast-In or Bolt-In (optional).

SPRING: Enclosed coil, Type 17-7 Stainless Steel.

HINGE: Heavy-duty Type 316 Stainless Steel.

HOLD OPEN ARM: Type 316 Stainless Steel, automatic, locks cover in open position.

LATCH: Slam latch, Type 316 Stainless Steel, with inside lever handle, includes removable threaded plug and key.

GASKET: EPDM gasket

OPTIONS: Padlock Hasps, Locks, Finishes, Gasket, Safety Grates, Safety Nets, Safety Rails, Skirting.

WARRANTY: 5 year

For a complete list of options visit www.BestAccessDoors.ca

SKU: **BAG-BFDNPA-SL**

NON-DRAINABLE FLOOR DOOR 300PSF



Single Leaf Door Shown

DIMENSIONS AND APPEARANCE

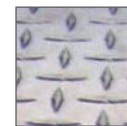
>> CLICK TO VIEW ADDITIONAL DETAILS AND PRICING <<

FIRE RATED DIAMOND TREAD FLOOR DOOR:

MODEL	WIDTH	X	LENGTH	INSTALLATION	COVER	FL
BFDNPA						
	SINGLE LEAF	DOUBLE LEAF		CAST-IN (STANDARD) BI - BOLT-IN	S - SINGLE LEAF D - DOUBLE LEAF E - DOUBLE SIDE BY SIDE T - TRIPLE SIDE BY SIDE	
	24" X 24"	48" X 48"				
	30" X 36"	48" X 72"				
	36" X 36"	60" X 60"				
	42" X 42"					

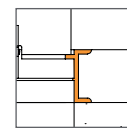
Additional sizes and options available, call for more information.

MATERIALS:

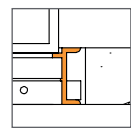


Aluminum

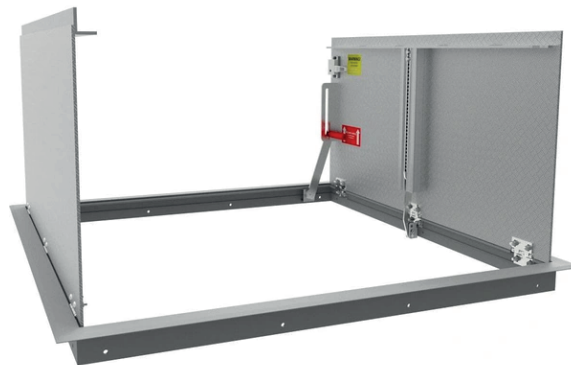
FRAME:



Angle Frame Cast-in



Angle Frame Bolt-in



PROJECT DATA

Custom Sizes Available - Fast!

Scan or Click



To view Pricing and Additional Product Info.

PROJECT NAME :	QTY	W	H	OPTIONS
ARCHITECT :				
DEALER :				
CONTRACTOR :				
LOCATION :	SPECIAL INSTRUCTIONS :			
DATE :				
TAGGING INSTRUCTIONS :	SUBMITTAL APPROVAL : (signature or stamp)			

TELEPHONE:
1-800-483-0823

FAX:
1-888-828-6021



385 WILSON STREET EAST,
SUITE 302
ANCASTER, ON, L9G 2C1
CANADA



WEBSITE:
www.BestAccessDoors.ca

E-MAIL:
info@bestaccessdoors.ca