



Quality Access Doors- FAST!

SUBMITTAL/TECHNICAL DATA SHEET

SKU: **BAC-TER-1**

SINGLE LEAF ACCESS DOOR

TYPE TER - PAN DOOR



SPECIFICATIONS

01. Automatic lock open arm
02. 1/4 Aluminum cover (Cover reinforced for 150 lbs per sq. foot live load)
03. Bilco 1/4" aluminum channel with extruded 1" anchor flange
04. Stainless steel 3" piano hinge
05. Terrazzo reinforced wire mesh (2"x1"x.063 galv.)
06. Standard slam lock
07. Removable square key wrench
08. Spring lifting mechanism
09. Guide arm (if req'd)

SHOP FINISH:

- ALUMINUM: Mill finish
- HARDWARE: Non-corrosive materials (Unless otherwise specified)

DIMENSIONS AND APPEARANCE

>> [CLICK TO VIEW ADDITIONAL DETAILS AND PRICING](#) <<

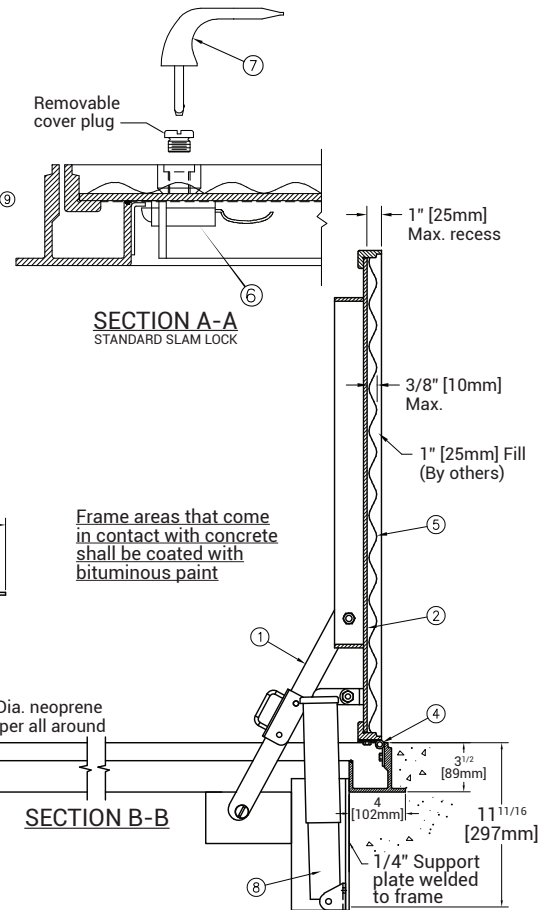
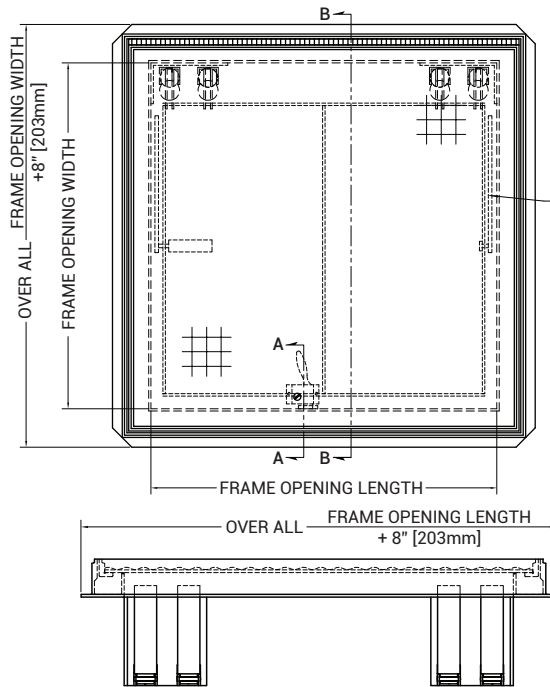
Reinforced for 150 lbs. Per sq. Ft. (732 kg. Per sq. Meter) live load

INSTALLER NOTES:

A. Use caution. Cover is spring loaded. Do not remove safety shipping bolt until unit is to be installed and in normal horizontal operating position.

B. Before anchoring in place open and close door. Check to see that the door in the closed position rests on the frame all around. If not, shim under the frame at the proper corner.

For a complete list of options visit www.BestAccessDoors.ca



NOTE:
TYPE TER DOORS ARE DESIGNED WITH A 1" [25mm] PAN COVER TO ACCEPT A VARIETY OF FLOORING MATERIALS. SIZES ARE LIMITED & DEPENDENT UPON WEIGHT OF FILL MATERIAL. (CONSULT FACTORY)

QTY	TYPE	SIZE WIDTH X LENGTH
	TER	X HINGE SIDE
TYPE & THICKNESS OF METARIAL TO BE INSTALLED ON PAN		
(TOTAL THICKNESS MUST BE 1" [25mm])		

PROJECT DATA

Custom Sizes Available - Fast!

PROJECT NAME :	QTY	W	H	OPTIONS
ARCHITECT :				
DEALER :				
CONTRACTOR :				
LOCATION :	SPECIAL INSTRUCTIONS :			
DATE :	SUBMITTAL APPROVAL : (signature or stamp)			
TAGGING INSTRUCTIONS :				

Scan or Click



To view Pricing and Additional Product Info.

TELEPHONE:
1-800-483-0823
FAX:
1-888-828-6021

385 WILSON STREET EAST,
SUITE 302
ANCASTER, ON, L9G 2C1
CANADA

WEBSITE:
www.BestAccessDoors.ca
E-MAIL:
info@bestaccessdoors.ca