



Quality Access Doors- FAST!

SUBMITTAL/TECHNICAL DATA SHEET

SPECIFICATIONS

01. Frame with capflashing (Corners full welded)
 - S-20SV - 14 gauge P.B. Galv. steel
 - S-40SV - 14 gauge P.B. Galv. steel
 - S-50SV - 11 gauge aluminum
02. Pintle hinge
03. Gasket (All around cover)
04. Cover gauge
 - S-20SV - 14 gauge P.B. Galv. steel
 - S-40SV - 11 gauge aluminum
 - S-50SV - 11 gauge aluminum
05. Cover liner
 - S-20SV - 22 gauge P.B. Galv. steel
 - S-40SV - 18 gauge aluminum
 - S-50SV - 18 gauge aluminum
06. Spring lifting mechanism
07. 1" Rigid fiberboard insulation
08. 165° Fusible link (Extra link provided)
09. Thermolatch® positive hold/release mechanism
10. Arm guide bracket
11. 1" Thick fiberglass cover insulation
12. Grab handle
13. Pull grip to open from inside 1/8" Dia steel cable
14. Pull grip to open from inside 1/8" Dia steel cable
15. Shock ansorber
16. Cover latch bracket
17. Guide arm (2 Req'd)
15. Bilclip® flashing system

SHOP FINISH:

- STEEL: Red oxide primer
- ALUMINUM: Mill finish
- HARDWARE: Non-corrosive materials (Unless otherwise specified)

This product may be installed on either a flat or sloping roof. When installed on a slope, the hinge side must run parallel with the slope. If slope exceeds 30°, advise factory for modification.

For a complete list of options visit www.BestAccessDoors.ca

QTY	TYPE	MATERIAL
<input type="checkbox"/>	S-20SV	STEEL COVER/STEEL FRAME
<input type="checkbox"/>	S-40SV	ALUM. COVER/STEEL FRAME
<input type="checkbox"/>	S-50SV	ALUM. COVER/ALUM. FRAME

TYPE E SIZE 3'-0" X 2'-6" (WIDTH X HEIGHT)

SKU: **BAC-S-90SV**

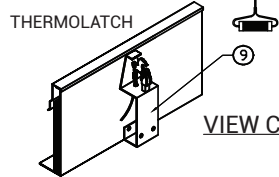
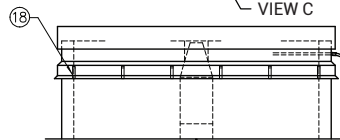
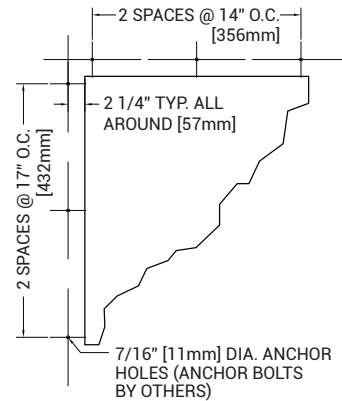
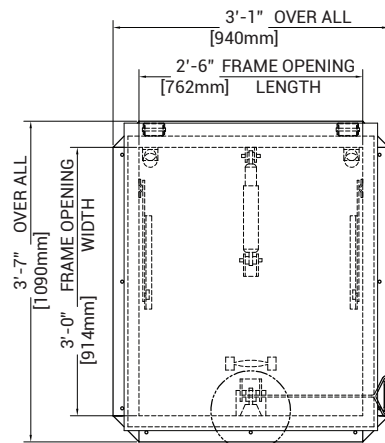
SINGLE LEAF FIRE VENT

TYPE S-SV



DIMENSIONS AND APPEARANCE

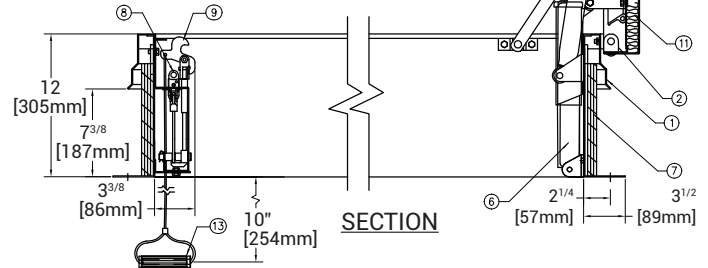
>> CLICK TO VIEW ADDITIONAL DETAILS AND PRICING <<



Thermolatch mechanism-covers will operate only when activated
 A. Manually
 B. By heat at 165° fusible link

ANCHOR HOLE LAYOUT

- NOTE:
1. Covers shall open against 10 PSF (49KG/M²) snow/wind load
 2. Vent assembly rated for 40 PSF (195KG/M²) live load
 3. Covers will remain closed under 90 PSF (438 KG/M²) wind uplift force



PROJECT DATA

Custom Sizes Available - Fast!

Scan or Click



To view Pricing and Additional Product Info.

PROJECT NAME :	QTY	W	H	OPTIONS
ARCHITECT :				
DEALER :				
CONTRACTOR :				
LOCATION :	SPECIAL INSTRUCTIONS :			
DATE :				
TAGGING INSTRUCTIONS :	SUBMITTAL APPROVAL : (signature or stamp)			

TELEPHONE:
1-800-483-0823

FAX:
1-888-828-6021

385 WILSON STREET EAST,
SUITE 302
ANCASTER, ON, L9G 2C1
CANADA



WEBSITE:
www.BestAccessDoors.ca

E-MAIL:
info@bestaccessdoors.ca