



Quality Access Doors- FAST!

SUBMITTAL/TECHNICAL DATA SHEET

APPLICATION

Economical access to round ducts

FEATURES

- Pull and catch lock system
- Gasketing on the door assures a tight seal without obstruction in the air system

SPECIFICATIONS

DOOR / DOOR FRAME: 16 gauge galvanized steel

GASKETING: 1/8" thick by 1" wide closed cell neoprene

STANDARD LATCH: Plated steel pull and catch

FINISH: Mill / Aluminum



SKU: **BAC-RD-5090**

DUCT DOORS

FOR ROUND DUCTS

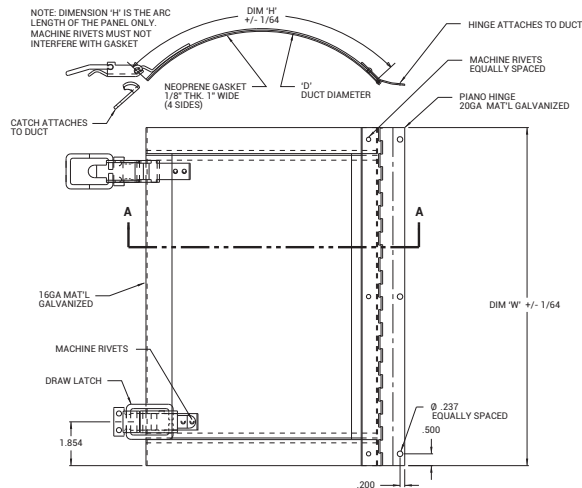
■ DIMENSIONS AND APPEARANCE

>> CLICK TO VIEW ADDITIONAL DETAILS AND PRICING <<

DOOR SIZE W x H INCHES (MM)	OPENING	WEIGHT	
		LBS	KG
7 x 5 (175 x 125)	6"	1.25	0.6
9 x 8 (225 x 200)	8"	1.75	0.8
11 x 9 (275 x 225)	10"	3.00	1.2
13 x 10 (325 x 250)	12"	3.50	1.6
15 x 13 (375 x 325)	14"	4.00	1.8
17 x 13 (425 x 325)	16"	5.50	2.5
19 x 15 (475 x 375)	18"	6.00	2.7
19 x 17 (475 x 425)	20"	6.75	3.1
20 x 17 (500 x 425)	24"	7.25	3.3

Duct opening is normal door size plus +3/8" (9mm)
For detailed specifications see submittal sheet

MANUFACTURED BY ACUDOR



For a complete list of options visit www.BestAccessDoors.ca

■ PROJECT DATA

Custom Sizes Available - Fast!

Scan or Click



To view Pricing and Additional Product Info.

PROJECT NAME :	QTY	W	H	OPTIONS
ARCHITECT :				
DEALER :				
CONTRACTOR :				
LOCATION :	SPECIAL INSTRUCTIONS :			
DATE :				
TAGGING INSTRUCTIONS :	SUBMITTAL APPROVAL : (signature or stamp)			

TELEPHONE:
1-800-483-0823

FAX:
1-888-828-6021

385 WILSON STREET EAST,
SUITE 302
ANCASTER, ON, L9G 2C1
CANADA



WEBSITE:
www.BestAccessDoors.ca

E-MAIL:
info@bestaccessdoors.ca

BAC-RD-5090

DOOR FOR ROUND DUCT

NOMINAL DOOR SIZE Inches (mm)	DIM 'W'	DIM 'H'	DIM 'D'	LBS	KG	DRAW LATCH
7 x 5 (175 x 125)	7.00 (140)	5.00 (125)	6.00	1-1/4	.6	2
9 x 8 (225 x 200)	9.00 (191)	8.00 (200)	8.00	1-3/4	.8	2
11 x 9 (275 x 225)	11.0 (241)	9.00 (225)	10.0	3	1.2	2
13 x 10 (325 x 250)	13.0 (292)	10.0 (250)	12.0	3-1/2	1.6	2
15 x 13 (375 x 325)	15.0 (343)	13.0 (325)	14.0	4	1.8	3
17 x 13 (425 x 325)	17.0 (394)	13.0 (325)	16.0	5-1/2	2.5	3
19 x 15 (475 x 375)	19.0 (445)	15.0 (375)	18.0	6	2.7	3
19 x 17 (475 x 425)	19.0 (495)	17.0 (425)	20.0	6-3/4	3.1	3
20 x 17 (500 x 425)	20.0 (597)	17.0 (425)	24.0	7-1/4	3.3	3

