



Quality Access Doors- FAST!

STANDARD OPTIONS

MATERIAL:

16 gauge cold rolled steel frame and
20 gauge galvalume steel door

INSULATION:

Mineral wool

HINGE:

Continuous piano hinge

LOCK / LATCH:

Self latching tool-key operated slam
latch and/or ring operated slam latch,
both included

INSIDE PANEL RELEASE:

Standard on all doors over 12" x 12"

AUTOMATIC PANEL CLOSER:

Standard on all doors

FINISH:

High quality white powder coat
primer

PACKAGING:

Individually wrapped, 1 per box

OPTIONS AVAILABLE

LOCK / LATCH:

- Mortise deadbolt lock
- Hex head slam latch
- Handle operated slam latch
- Mortise preparation for cylinder
(Cylinder optional)

MATERIAL:



Stainless steel #4 (brushed finish)

MASONRY ANCHOR:

Available on all sizes

Fire Rating information on Page 2

For a complete list of options visit
www.BestAccessDoors.ca

Scan  or  Click



To view Pricing and
Additional Product Info.

LEED READY: THIS PRODUCT
CONTRIBUTES TO LEED® CREDITS



SUBMITTAL/TECHNICAL DATA SHEET

SKU: **BAC-PFI**

FIRE RATED INSULATED ACCESS DOOR

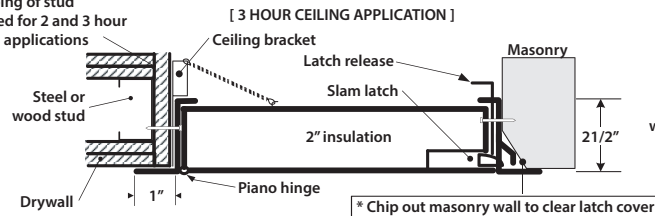
FOR ALL SURFACE TYPES



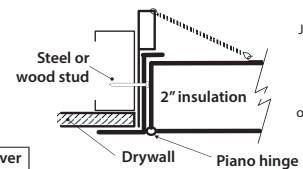
INSTALLATION

>> CLICK TO VIEW ADDITIONAL DETAILS AND PRICING <<

Wrapping of stud
required for 2 and 3 hour
ceiling applications
only



[1 HOUR CEILING APPLICATION]

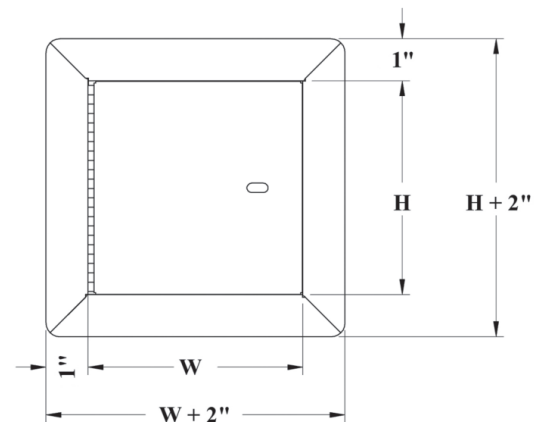


Authorities Having
Jurisdiction (AHJ) should
be consulted in all cases
as to the particular
requirements covering
the installation and use
of fire rated access doors.

DIMENSIONS AND APPEARANCE

STANDARD SIZES:

DOOR SIZE W x H inches (MM)	NUMBER OF LOCKS	WEIGHT LBS	KG
8 x 8 (203 x 203)	1	7	3.2
10 x 10 (254 x 254)	1	8	3.6
12 x 12 (304 x 304)	1	10	4.5
14 x 14 (355 x 355)	1	12	5.4
16 x 16 (406 x 406)	1	14	6.4
18 x 18 (457 x 457)	1	17	7.7
22 x 22 (558 x 558)	1	20	9.1
22 x 30 (558 x 762)	1	30	13.6
22 x 36 (558 x 914)	2	34	15.5
24 x 24 (609 x 609)	1	28	12.7
24 x 36 (609 x 914)	2	36	16.4
* 24 x 48 (609 x 1219)	2	48	21.8
* 30 x 30 (762 x 762)	1	40	18.1
* 32 x 32 (812 x 812)	2	43	19.5
* 36 x 36 (914 x 914)	2	50	22.7
* 48 x 48 (1219 x 1219)	2	83	37.7



ROUGH WALL OPENING IS DOOR SIZE + 1/4\"/>

PROJECT DATA

Custom Sizes Available - Fast!

PROJECT NAME :	QTY	W	H	OPTIONS
ARCHITECT :				
DEALER :				
CONTRACTOR :				
LOCATION :	SPECIAL INSTRUCTIONS :			
DATE :	SUBMITTAL APPROVAL : (signature or stamp)			
TAGGING INSTRUCTIONS :				

TELEPHONE:
1-800-483-0823
FAX:
1-888-828-6021



385 WILSON STREET EAST,
SUITE 302
ANCASTER, ON, L9G 2C1
CANADA



WEBSITE:
www.BestAccessDoors.ca
E-MAIL:
info@BestAccessDoors.ca

■ FIRE RATING

FIRE RATED ACCESS DOORS, FOR VERTICAL USE, ARE SUBJECT TO THE FOLLOWING:

VERTICAL WALL ASSEMBLIES

Fire rated access doors, for vertical use, are subject to the following:

CERTIFICATION

UL 10B (2009), NFPA 252 (2012), CAN/ULC S104 (2010).

RATING ACHIEVED

3 hours, neutral/negative pressure

MAXIMUM SIZE

48" x 48" (1219mm x 1219mm), maximum area of 2304 in², tolerance on height and width limitation is more or less 3" (76mm) as long as the area does not exceed 2304 in².

TEMPERATURE RISE

250°F (121°C) after 30 minutes and 450°F (232°C) after 60 minutes.

FIRE RATED ACCESS DOORS, FOR HORIZONTAL USE, ARE SUBJECT TO THE FOLLOWING:

HORIZONTAL CEILING ASSEMBLIES

Fire rated access doors, for horizontal use, are subject to the following:

CERTIFICATION

ASTM E119 (2012), CAN/ULC S101 (2007)

RATING ACHIEVED

3 hours in non-combustible construction and 1 hour in combustible construction

MAXIMUM SIZE

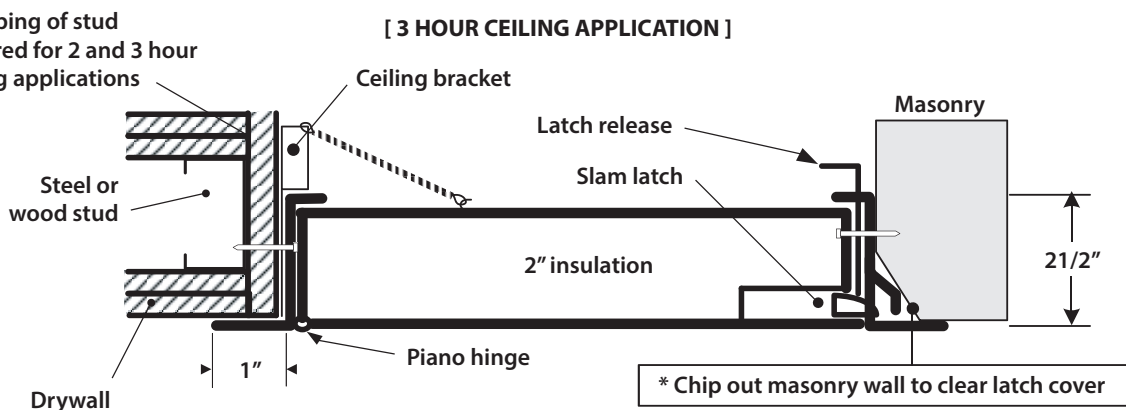
24"X36" (610 mm X 914 mm) (hinges and latches on the side of 36"), tolerance on dimension limitations are more or less 3" (76 mm) as long as the area does not exceed 864 in².

TEMPERATURE RISE

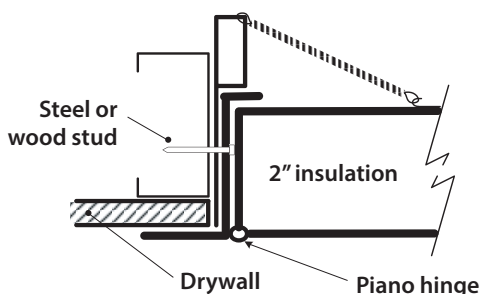
Within allowable per ASTM E119 and CAN/ULC S101

■ INSTALLATION: WALLS AND CEILINGS

Wrapping of stud required for 2 and 3 hour ceiling applications only



[1 HOUR CEILING APPLICATION]



Authorities Having Jurisdiction (AHJ) should be consulted in all cases as to the particular requirements covering the installation and use of fire rated access doors.



TELEPHONE:
1-800-483-0823
FAX:
1-888-828-6021



385 WILSON STREET EAST,
SUITE 302
ANCASTER, ON, L9G 2C1
CANADA



WEBSITE:
www.BestAccessDoors.ca
E-MAIL:
info@BestAccessDoors.ca