



Quality Access Doors- FAST!

SUBMITTAL/TECHNICAL DATA SHEET

SPECIFICATIONS

01. Thermally broken curb with integral capflashing 11 ga. Aluminum (Corners fully welded)
02. Extruded aluminum cover frame
03. Double dome with sealant all around (Clear Polycarbonate over clear polycarbonate) 4.3" [75mm] polyisocyanurate curb insulation
05. Condensate channel with drainage to exterior
06. EPDM gasket (All around cover)
07. Pintle hinge - Stainless steel type 316
08. Bilclip® flashing system
09. Slam latch with inside and Outside handles with padlock hasps
10. Lock strike and padlock hasp
11. Lifting mechanism with reinforced composite tubes and compression springs
12. Automatic hold open arm with red vinyl grip and cover release
13. Arm guide bracket

SHOP FINISH

ALUMINIUM: Mill finish

HARDWARE: Corrosion resistant
(Unless otherwise specified)

NOTES:

This product may be installed on either a flat or sloping roof. When installed on a slope, the hinge side must run parallel with the slope. If slope exceeds 30°, advise factory for modification.

SKU: **BAC-GS-50TB**

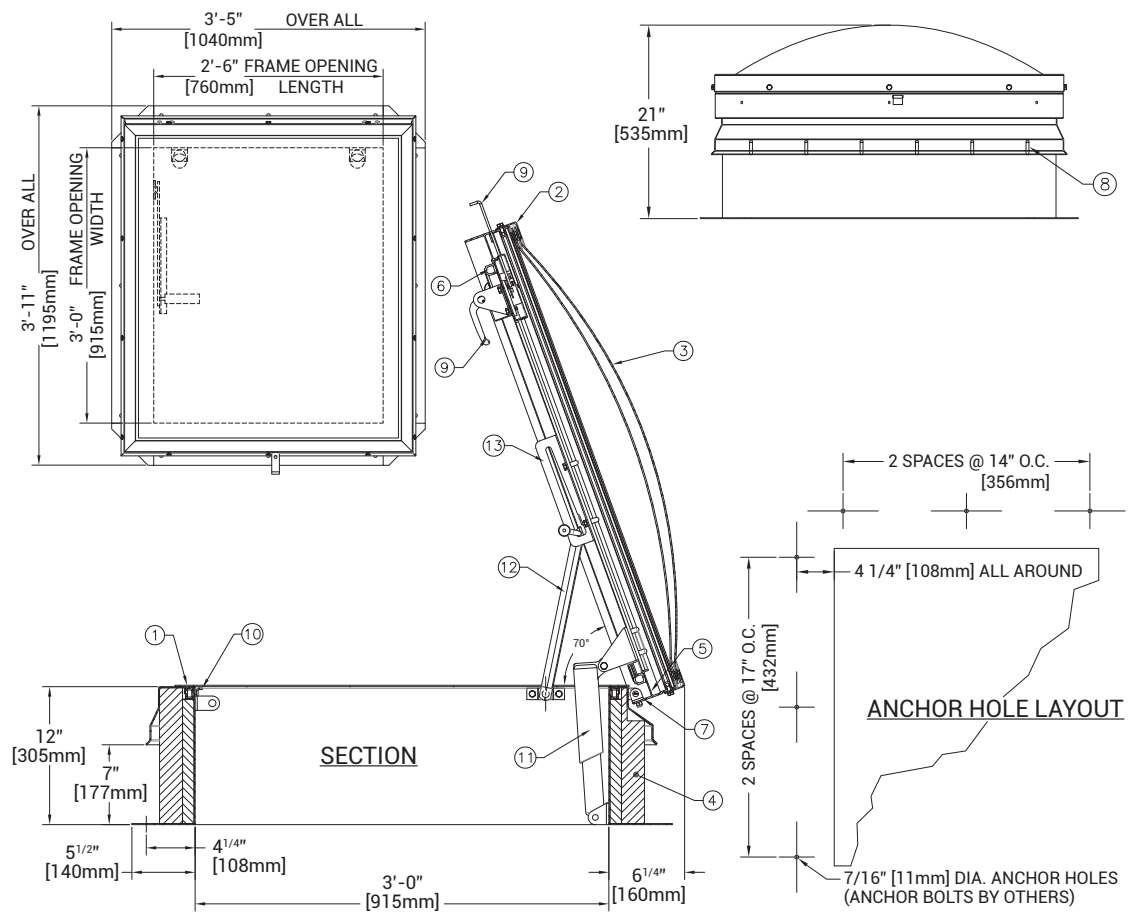
SINGLE LEAF FIRE VENT

TYPE GS



DIMENSIONS AND APPEARANCE

>> CLICK TO VIEW ADDITIONAL DETAILS AND PRICING <<



For a complete list of options visit
www.BestAccessDoors.ca

QTY TYPE

SIZE
WIDTH X LENGTH





GS-50TB

3'-0" X 2'-6"
915mm X 760mm
HINGE SIDE

PROJECT DATA

Custom Sizes Available - Fast!

PROJECT NAME :	QTY	W	H	OPTIONS
ARCHITECT :				
DEALER :				
CONTRACTOR :				
LOCATION :	SPECIAL INSTRUCTIONS :			
DATE :				
TAGGING INSTRUCTIONS :	SUBMITTAL APPROVAL : (signature or stamp)			

Scan  or  Click



To view Pricing and
Additional Product Info.

TELEPHONE:
1-800-483-0823
FAX:
1-888-828-6021



385 WILSON STREET EAST,
SUITE 302
ANCASTER, ON, L9G 2C1
CANADA



WEBSITE:
www.BestAccessDoors.ca
E-MAIL:
info@bestaccessdoors.ca