



Quality Access Doors- FAST!

# SUBMITTAL/TECHNICAL DATA SHEET

## SPECIFICATIONS

01. Hold open/self closing pneumatic cylinder
02. 1/4 Aluminum plate cover (Cover reinf. for 150 lbs per sq. foot live load)
03. 1/4" Aluminum channel with extruded 1" anchor flange
04. Stainless steel 3" piano hinge
05. Terrazzo reinfo. wire mesh (2"x1"x.063Ga.)
06. Slam lock with cable and pull handle
07. Removable square key wrench
08. Lifting mechanism with reinforced composite tubes and compression springs
09. Removable cover plug
10. Release mechanism with 165° fusible link and 16 gram co2 cartridge (Extra link provided)
11. Guide arm (If req'd)

### SHOP FINISH:

ALUMINUM: Mill finish

HARDWARE: Zinc plated and chromate sealed (Unless otherwise Specified)

Reinforced for 150lbs per sq. ft. (732 KG. per Sq. meter) live load

## INSTALLER NOTES

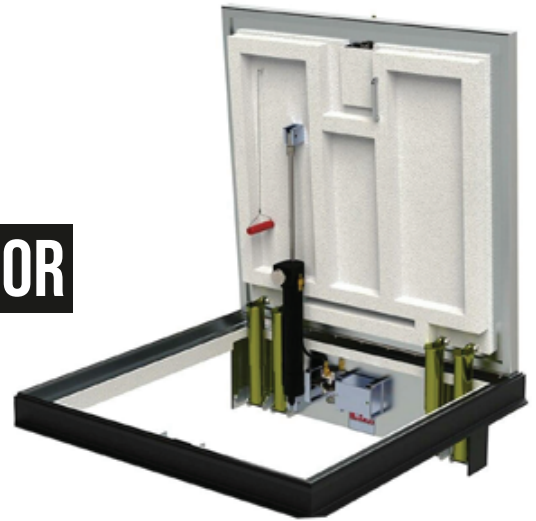
- A. Use caution, cover is spring loaded. Do not remove safety shipping bolt until unit is to be installed and in normal horizontal operating position.
- B. Before anchoring in place open and close door. Check to see that the door in the closed position rests on the frame all around. If not, shim under the frame at the proper corner.
- C. See installation procedure shipped with door.

For a complete list of options visit [www.BestAccessDoors.ca](http://www.BestAccessDoors.ca)

QTY	TYPE	SIZE WIDTH X LENGTH
<input type="checkbox"/>	FR-2	2'-6" X 2'-6" [762mm] X [762mm]
<input type="checkbox"/>	FR-3	3'-0" X 2'-6" [914mm] X [762mm]
<input type="checkbox"/>	FR-4	3'-0" X 3'-0" [914mm] X [914mm]
<input type="checkbox"/>	FR-5	3'-6" X 3'-6" [1065mm] X [1065mm]
<input type="checkbox"/>	FR-6	2'-6" X 4'-0" [762mm] X [1219mm]

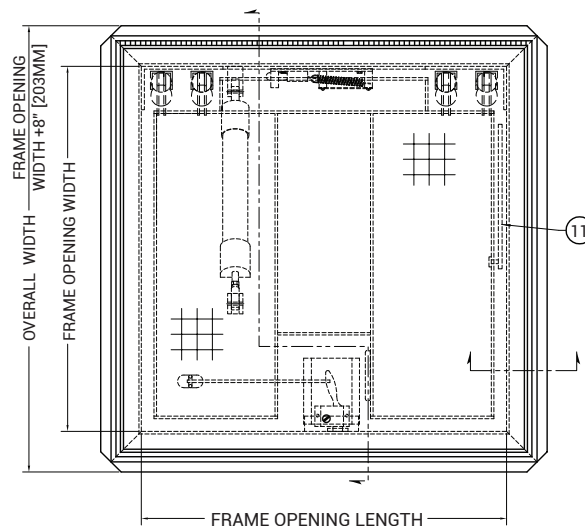
SKU: **BAG-FR**

## FIRE-RATED FLOOR DOOR



## DIMENSIONS AND APPEARANCE

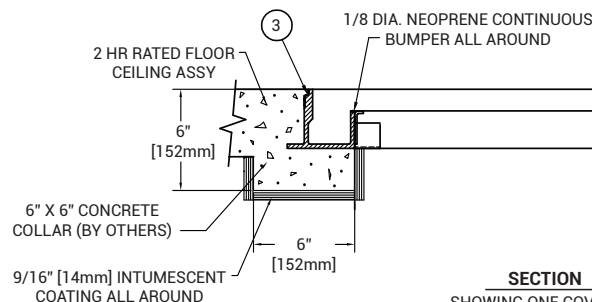
>> CLICK TO VIEW ADDITIONAL DETAILS AND PRICING <<



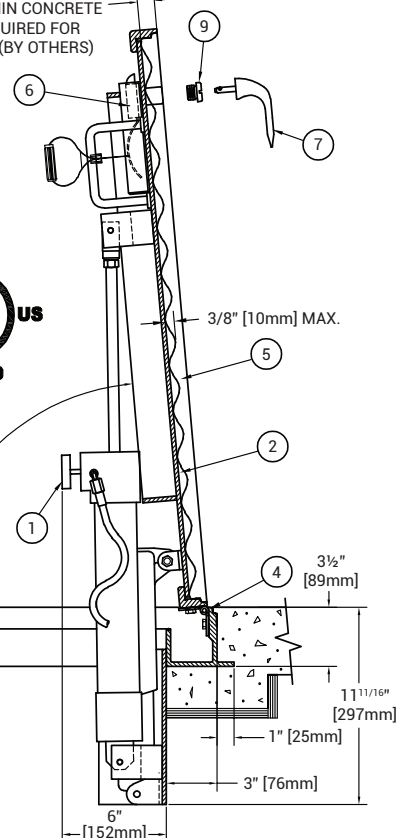
1" [25mm] MAX RECESS  
1/2" [13mm] MIN CONCRETE  
IN PAN REQUIRED FOR  
FIRE RATING (BY OTHERS)



For Detailed Specifications See Submittal Sheet





SECTION  
SHOWING ONE COVER OPEN



## PROJECT DATA

Custom Sizes Available - Fast!

Scan  or  Click



To view Pricing and Additional Product Info.

PROJECT NAME :	QTY	W	H	OPTIONS
ARCHITECT :				
DEALER :				
CONTRACTOR :				
LOCATION :	SPECIAL INSTRUCTIONS :			
DATE :				
TAGGING INSTRUCTIONS :	SUBMITTAL APPROVAL : (signature or stamp)			

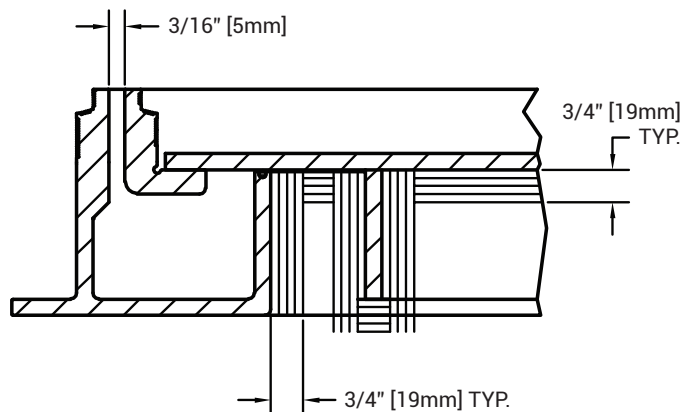
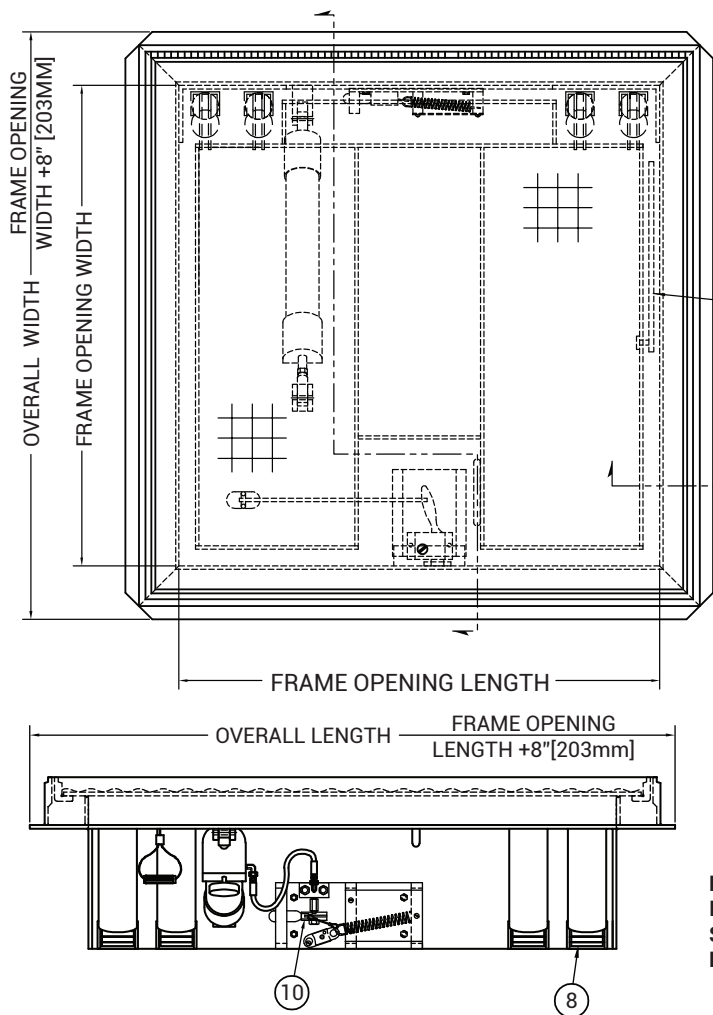
TELEPHONE:  
1-800-483-0823  
FAX:  
1-888-828-6021

385 WILSON STREET EAST,  
SUITE 302  
ANCASTER, ON, L9G 2C1  
CANADA

WEBSITE:  
[www.BestAccessDoors.ca](http://www.BestAccessDoors.ca)  
E-MAIL:  
[info@bestaccessdoors.ca](mailto:info@bestaccessdoors.ca)

# BAC-FR

# FIRE-RATED FLOOR DOOR

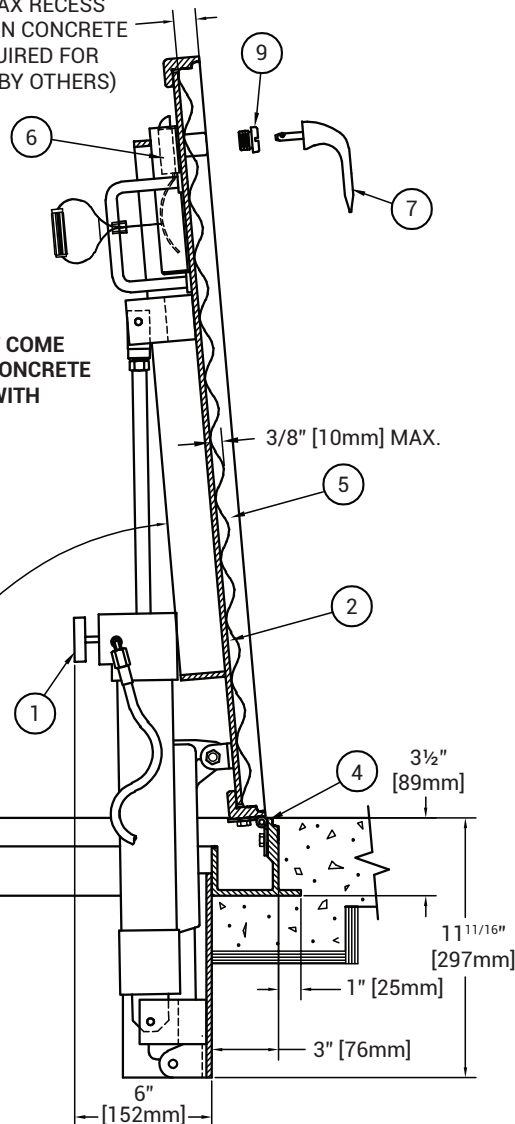


**TYPICAL SECTION OF ALBI CLAD 900  
INTUMESCENT MASTIC FIRE PROOF COATING**

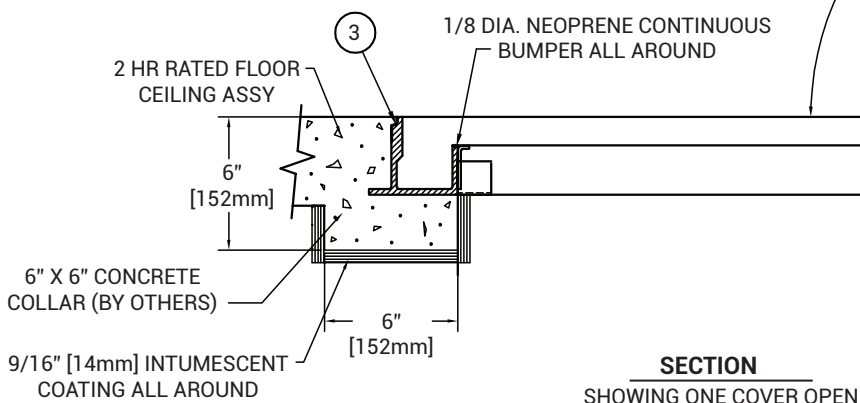
1" [25mm] MAX RECESS  
1/2" [13mm] MIN CONCRETE  
IN PAN REQUIRED FOR  
FIRE RATING (BY OTHERS)



FRAME AREAS THAT COME  
IN CONTACT WITH CONCRETE  
SHALL BE COATED WITH  
BITUMINOUS PAINT



**NOTE:**  
TYPE FR DOORS ARE DESIGNED WITH A 1" [25mm] PAN COVER TO ACCEPT A VARIETY OF FLOORING MATERIALS. SIZES ARE LIMITED & DEPENDENT UPON WEIGHT OF FILL MATERIAL, CONSULT FACTORY.  
FRAME MUST BE EMBEDDED IN A 6" X 6" [MINIMUM] CONCRETE COLLAR ALL AROUND TO RETAIN 2 HR U.L. LISTING. 9/16" INTUMESCENT COATING ALL AROUND TYPICAL (SUPPLIED BY BILCO) APPLIED BY OTHERS IN THE FIELD. SEE ACTION.



**SECTION  
SHOWING ONE COVER OPEN**