



Quality Access Doors- FAST!

# SUBMITTAL/TECHNICAL DATA SHEET

## SPECIFICATIONS

- 01. Frame with capflashing (corners full welded)
  - E-20 - 14 gauge P.B. Galv. steel
  - E-40 - 14 gauge P.B. Galv. steel
  - E-50 - 11 gauge aluminum
- 02. Pintle hinge
- 03. Gasket (All around cover)
- 04. Cover gauge
  - E-20 - 14 gauge P.B. Galv. steel
  - E-40 - 11 gauge aluminum
  - E-50 - 11 gauge aluminum
- 05. Cover liner
  - E-20 - 22 gauge P.B. Galv. steel
  - E-40 - 18 gauge aluminum
  - E-50 - 18 gauge aluminum
- 06. Spring lifting mechanism
- 07. 1" Rigid fiberboard insulation
- 08. Slam latch
- 09. Inside and outside handles with padlock hasps
- 10. Arm guide bracket
- 11. 1" Thick fiberglass cover insulation
- 12. Hold open arm with red vinyl grip
- 13. Neoprene gasket
- 14. Lock strike & padlock hasp
- 15. Bilclip® flashing system

### SHOP FINISH:

- STEEL: red oxide primer
- ALUMINUM: mill finish
- HARDWARE: non-corrosive materials  
(Unless otherwise specified)

This product may be installed on either a flat or sloping roof. When installed on a slope, the hinge side must run parallel with the slope. If slope exceeds 30°, advise factory for modification.

For a complete list of options visit [www.BestAccessDoors.ca](http://www.BestAccessDoors.ca)

QTY	TYPE	MATERIAL
<input type="checkbox"/>	E-20	STEEL COVER/STEEL FRAME
<input type="checkbox"/>	E-40	ALUM. COVER/STEEL FRAME
<input type="checkbox"/>	E-50	ALUM. COVER/ALUM. FRAME

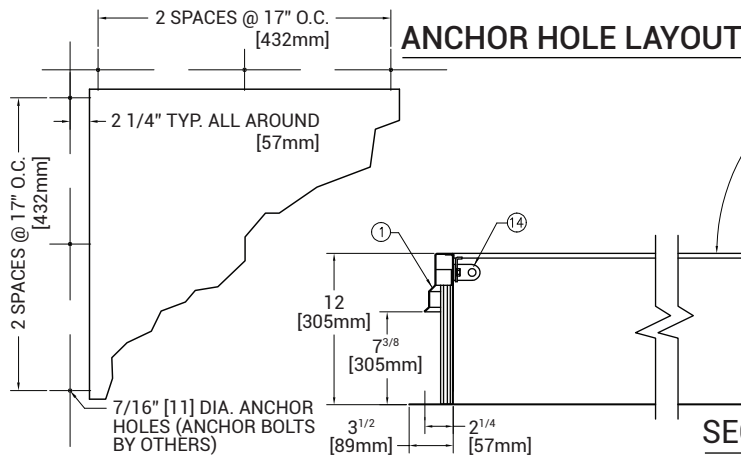
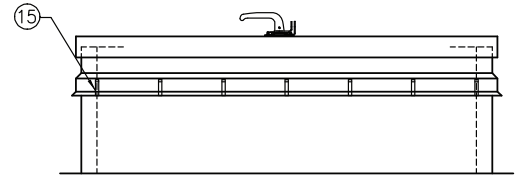
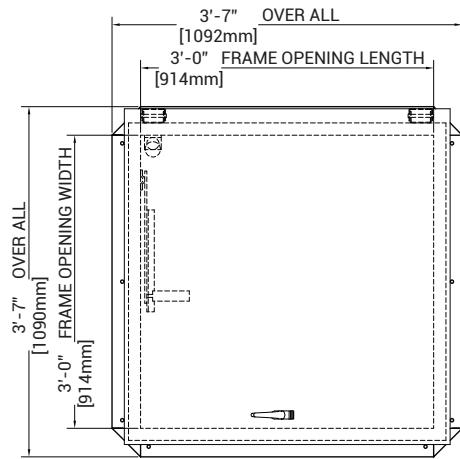
TYPE E SIZE 3'-0" X 3'-0" (WIDTH X HEIGHT)



SKU: **BAC-E-40**  
**SINGLE LEAF ROOF SCUTTLE**  
 TYPE E

## DIMENSIONS AND APPEARANCE

>> CLICK TO VIEW ADDITIONAL DETAILS AND PRICING <<



SECTION

## PROJECT DATA

Custom Sizes Available - Fast!

Scan or Click



BEST ACCESS DOORS

To view Pricing and Additional Product Info.

PROJECT NAME :	QTY	W	H	OPTIONS
ARCHITECT :				
DEALER :				
CONTRACTOR :				
LOCATION :	SPECIAL INSTRUCTIONS :			
DATE :				
TAGGING INSTRUCTIONS :	SUBMITTAL APPROVAL : (signature or stamp)			

TELEPHONE:  
1-800-483-0823

FAX:  
1-888-828-6021

385 WILSON STREET EAST,  
SUITE 302  
ANCASTER, ON, L9G 2C1  
CANADA



WEBSITE:  
[www.BestAccessDoors.ca](http://www.BestAccessDoors.ca)

E-MAIL:  
[info@bestaccessdoors.ca](mailto:info@bestaccessdoors.ca)