

# BAC-ADWT

## TECHNICAL DATA SHEET



AIRTIGHT / WATERTIGHT  
ACCESS DOOR - PRIME  
COATED

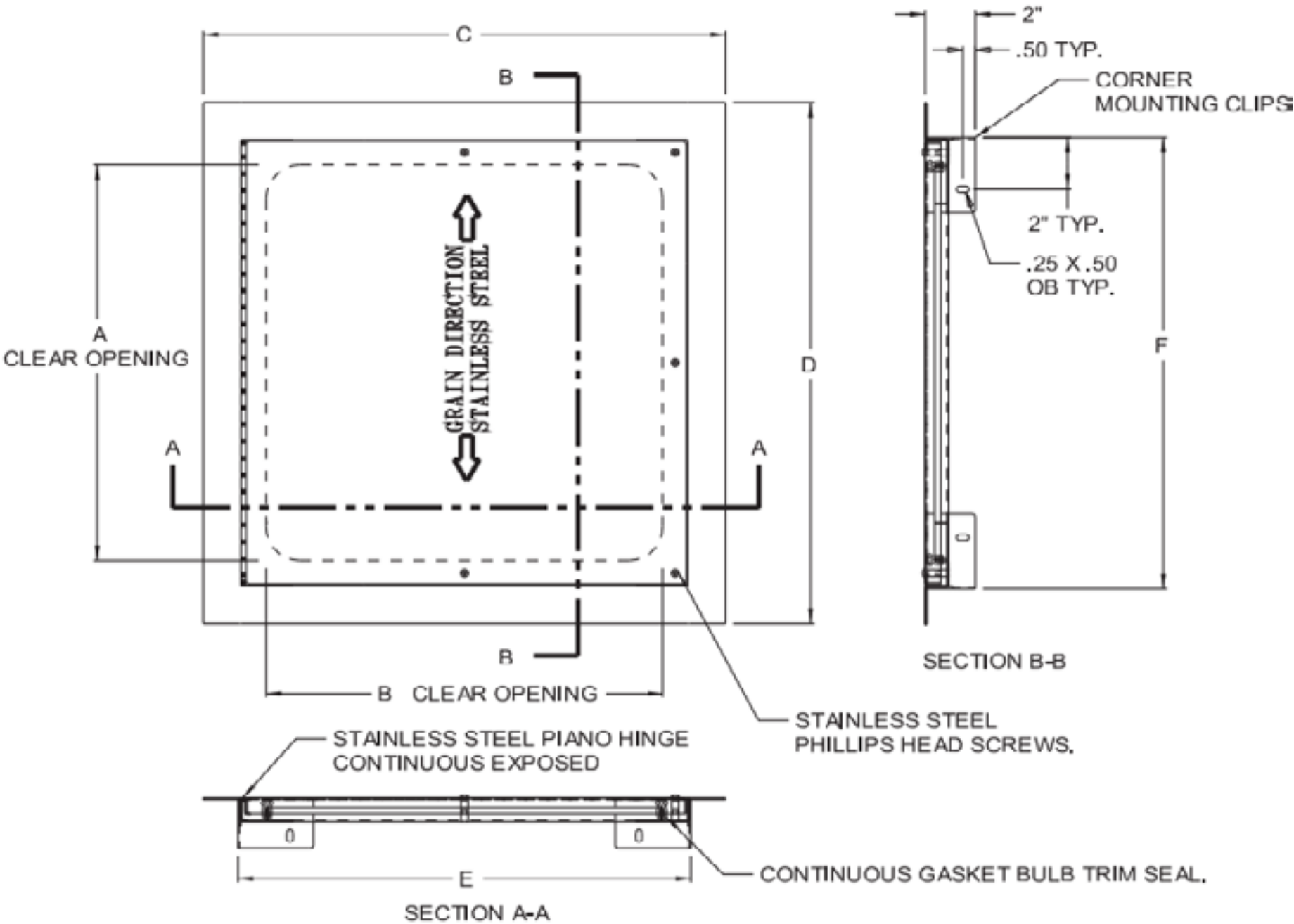
SKU: **BAC-ADWT**



[CLICK TO VIEW PRICING](#)

NOMINAL SIZE	A	B
12 x 12 (305 x 305)	9.65 (245)	9.65 (245)
14 x 14 (355 x 355)	11.65 (296)	11.65 (296)
18 x 18 (457 x 457)	15.65 (397)	15.65 (397)
24 x 24 (610 x 610)	21.65 (550)	21.65 (550)
24 x 36 (610 x 914)	33.65 (855)	21.65 (550)
30 x 30 (762 x 762)	27.65 (702)	27.65 (702)
30 x 48 (762 x 1219)	45.65 (1159)	27.65 (702)

D	E	F	SCREWS
14.75 (375)	12.00 (305)	12.00 (305)	2
16.75 (425)	14.00 (355)	14.00 (355)	2
20.75 (527)	18.00 (457)	18.00 (457)	2
26.75 (679)	24.00 (610)	24.00 (610)	2
38.75 (984)	24.00 (610)	36.00 (914)	3
32.75 (832)	30.00 (762)	30.00 (762)	5
50.75 (1289)	30.00 (762)	48.00 (1219)	5



THIS DOOR HAS BEEN TESTED AS FOLLOWS:  
AIR INFILTRATION : LESS THAN 0.01 CFM/SQ FOOT: ASTM E 283  
WATER RESISTANCE: NO LEAKAGE AT 15.05 PSF: ASTM E 331

STANDARD FEATURES:  
FRAME FULLY WELDED TO PREVENT LEAKAGE.  
CONTINUOUS GASKET BULB TRIM SEAL.  
STAINLESS STEEL PHILLIPS HEAD SCREWS

- OPTIONS:
- |  |   |  |                                     |
|--|---|--|-------------------------------------|
| <input type="checkbox"/> LOCK                  | <input type="checkbox"/> SCREW TYPE         | <input type="checkbox"/> MATERIAL        | <input type="checkbox"/> FINISH     |
| <input type="checkbox"/> CYLINDER LOCK AND KEY | <input type="checkbox"/> ALLEN HEAD SCREW   | <input type="checkbox"/> STAINLESS STEEL | <input type="checkbox"/> MILD STEEL |
|  | <input type="checkbox"/> SPANNER HEAD SCREW | <input type="checkbox"/> OTHER           | <input type="checkbox"/> OTHER      |
|  | <input type="checkbox"/> OTHER              |  |                                     |

MANUFACTURED BY ACUDOR

TOLL FREE PHONE:  
1-800-483-0823

[www.BestAccessDoors.ca](http://www.BestAccessDoors.ca)

WE ALSO DO  
CUSTOM!

Scan to view pricing.

