

# BA-TD-5025

Specialty Access Door,  
Recessed Access Door for Tile and Marble

### Application

- This recessed access door is ideal for use on tiled and marbled walls
- Door accepts tiles/marbles with grout gaps, harmoniously blending with surroundings
- Installed door remains invisible ensuring architecturally pleasing appearance

### Product Features

- Zinc coated steel provides superior corrosion resistance
- Concealed heavy duty hinge
- Recessed door accepts Tiles and Marbles of varied thicknesses
- Concealed Latch

Material: 16 Ga Satin Coat Steel

Door: 16 Ga, 3/4" recessed tray to accept 5/8" MDF and glue by others

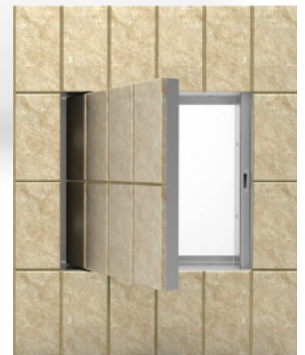
Frame: 16 Ga, press bent for strength and rigidity

Hinge: Continuous concealed piano hinge

Standard Lock: Cam Latch

Optional Lock: Touch Latch, Magnetic Lock

Finish: Powder coated RAL 9016

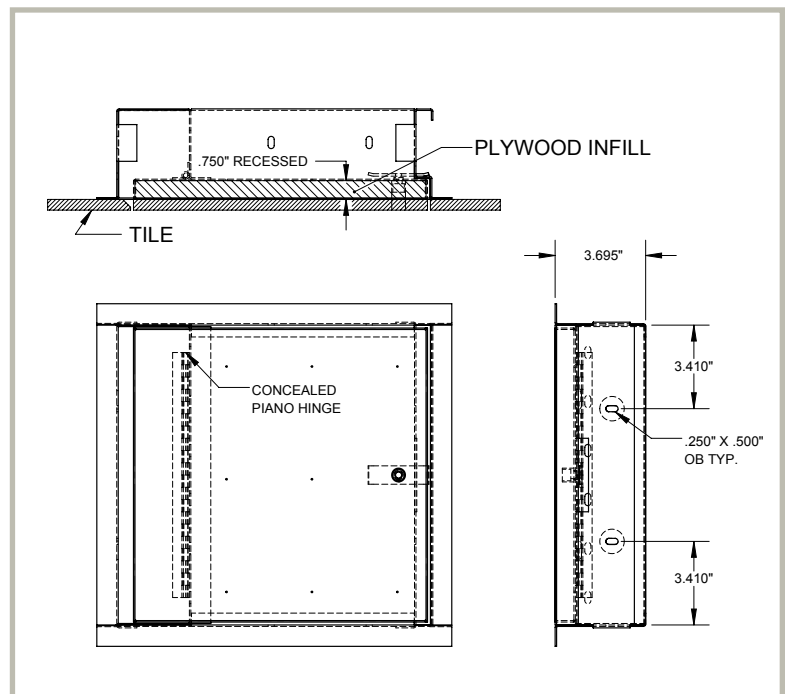


### BA-TD-5025 Specifications

(other sizes available upon request)

Nominal Door Size W&H		Latches	Weight per Door	
Inches	mm		lbs.	kg.
12 X 12	300 X 300	1	10	4.5
14 X 14	350 X 350	1	13	5.9
16 X 16	400 X 400	1	15	6.8
18 X 18	450 X 450	1	18	8.2
24 X 24	610 X 610	1	25	11.3
24 X 36	610 X 914	2	34	15.4

For detailed specifications see submittal sheet.



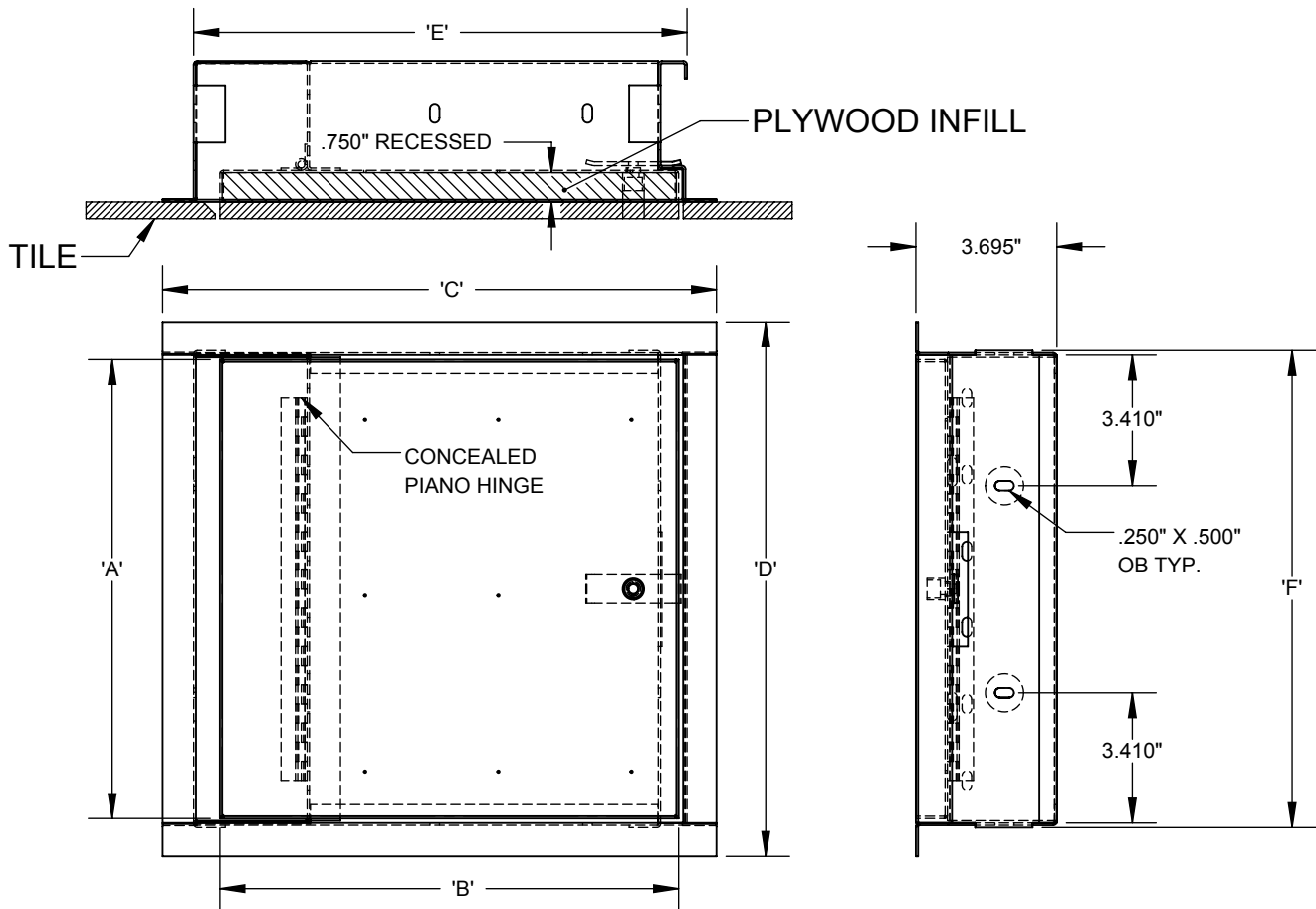


Box 30021 - RPO Upper James St, Hamilton, Ontario, L9B 0E4  
 For more information, contact BestAccessDoors.  
 BestAccessDoors  
 Phone: 1-800-483-0823  
 Fax: 1-888-828-6021  
 Email: info@BestAccessDoors.ca

# BA-TD-5025

## RECESSED DOOR FOR TILE

QTY	NOMINAL SIZE	A	B	C	D	E	F	LATCHES
	12 x 12	12	12	14.486	13.983	12.901	12.476	1
	14 x 14	14	14	16.486	15.983	14.901	14.476	1
	16 x 16	16	16	18.486	17.983	16.901	16.476	1
	18 x 18	18	18	20.486	19.983	18.901	18.476	1
	24 x 24	24	24	26.486	25.983	24.901	24.476	1
	24 x 36	24	36	38.486	25.983	36.901	24.476	2



**STANDARD FEATURES:** CONCEALED HEAVY DUTY HINGE  
 SCREWDRIVER CAM LATCH  
 16 GAUGE ZINC COATED STEEL FRAME  
 16 GAUGE 3/4" RECESSED TRAY  
 POWDER COATED RAL 9016

**OPTIONS:**

**LOCK TYPE:**

- TOUCH LATCH
- MAGNETIC LATCH
- OTHER

**MATERIAL:**

- STAINLESS STEEL
- OTHER

**FINISH:**

- OTHER

JOB NAME:

APPROVED BY:

CUSTOMER:

DATE: