

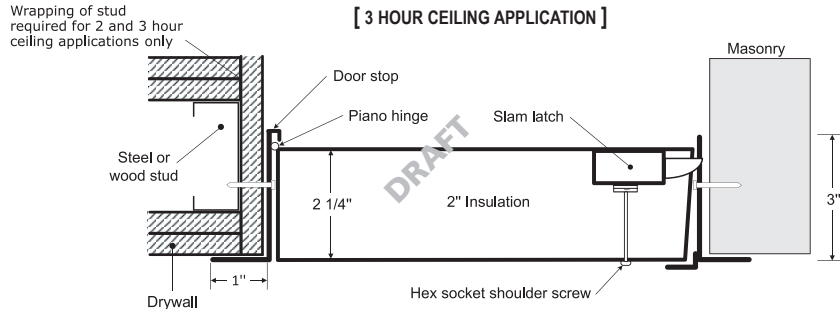


Best Access Doors SUBMITTAL / TECHNICAL DATA SHEET

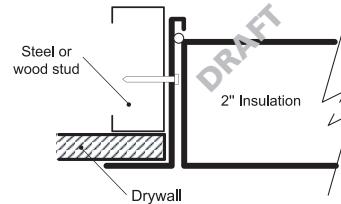
FIRE RATED INSULATED UPWARD OPENING ACCESS DOOR FOR CEILINGS ONLY

BA-PFU

INSTALLATION: CEILINGS ONLY



[1 HOUR CEILING APPLICATION]

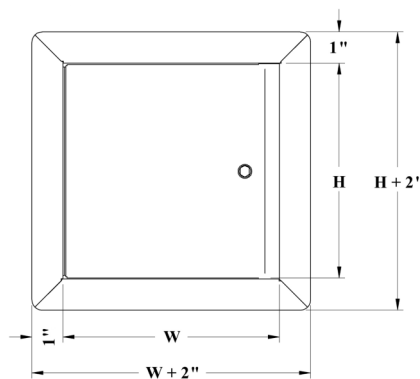


Authorities Having Jurisdiction (AHJ) should be consulted in all cases as to the particular requirements covering the installation and use of fire rated access doors.

DIMENSIONS AND APPEARANCE

LEED ready: This product contributes to LEED® credits.

DOOR SIZE W x H inches (MM)	NUMBER OF LOCKS	WEIGHT LBS	KG
22 x 30 (558 x 762)	1	30	30.6
22 x 36 (558 x 914)	2	37	16.8
24 x 24 (609 x 609)	1	29	13.2
(Clear opening with door opened = W - 3 1/2")			
Rough wall opening is door size + 1/4" or + 6mm			
Your odd sizes: Made in 5 days			



DESCRIPTION AND MATERIAL SPECIFICATION

FIRE RATING: For horizontal ceiling assemblies only:

RATING: 3 hours for non-combustible assembly and 1 hour for combustible assembly: Temperature rise: Max 250°F/139°C at 30 mins, 450°F/250°C at 60 mins.
Maximum door size: 24" x 36" or 864 sq inches (see note 1)

STANDARDS LISTED: NFPA 252-2003, UL 10b, UL-555, CAN/ULC S112 M90-R2001, CAN/ULC S104-10, MEA # 507-06-M

NOTE 1: Maximum door size 24" x 36" can also be calculated by multiplying the surface area of the door (24" x 36"). The maximum surface area is 864 sq. inches. All door sizes equal or smaller than 864 sq. inches fall within the standards. In addition, sizing of the doors have a maximum 3" allowance as long as the area of the doors are kept to the minimum requirement.

Material: 16 gauge cold rolled steel frame and 20 gauge galvalume steel door
Insulation: 2" thick mineral wool
Hinge: continuous piano hinge allows opening to 89°
Lock / latch: self latching ring operated slam latch inside and a hex head slam latch outside
Finish: high quality white powder coat primer
Packaging : individually wrapped, 1 per box

POPULAR For complete list of options
OPTIONS go to: www.BestAccessDoors.ca

Material : stainless steel #4 (brushed finish)



PROJECT DATA

PROJECT NAME:	QTY	W	H	OPTIONS
ARCHITECT:				
DEALER:				
CONTRACTOR:				
LOCATION:	SPECIAL INSTRUCTIONS:			
DATE:				
TAGGING INSTRUCTIONS:	SUBMITTAL APPROVAL: (signature or stamp)			

ADDRESS: Box 30021 - RPO Upper James St, Hamilton, Ontario, L9B 0E4

Tel.: 1-800-483-0823

Fax: 1-888-828-6021

www.BestAccessDoors.ca

sales@bestaccessdoors.ca