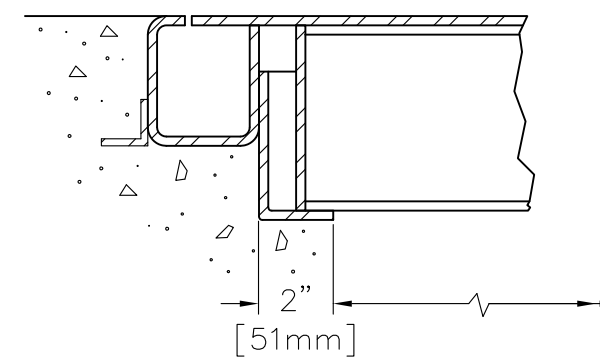
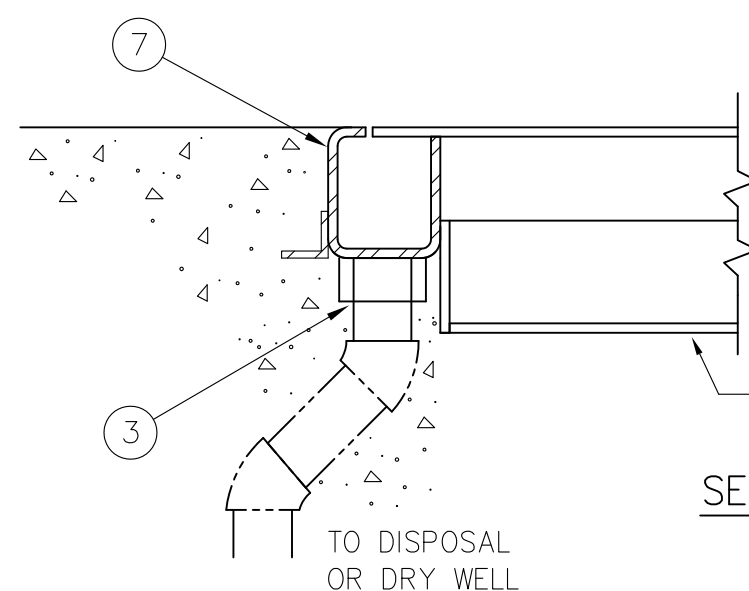
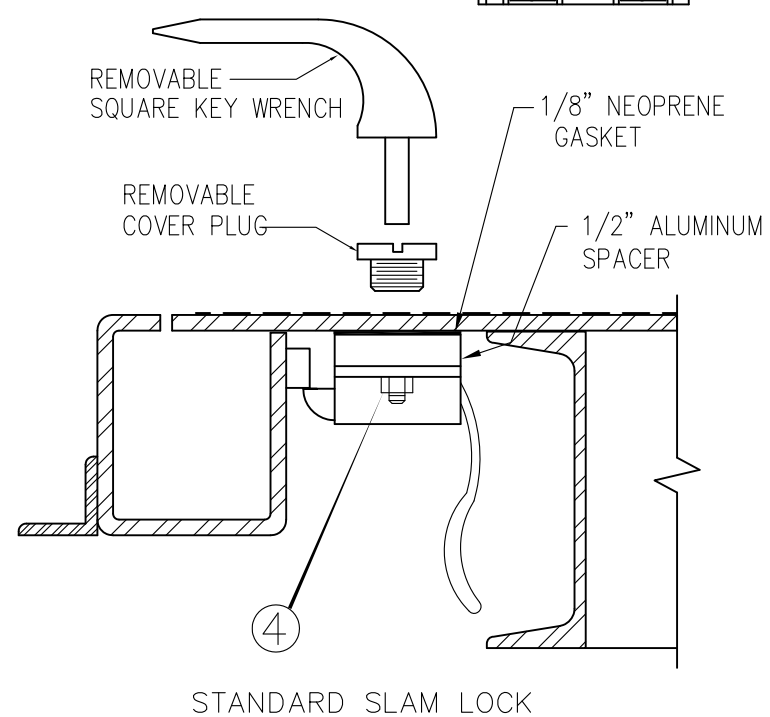
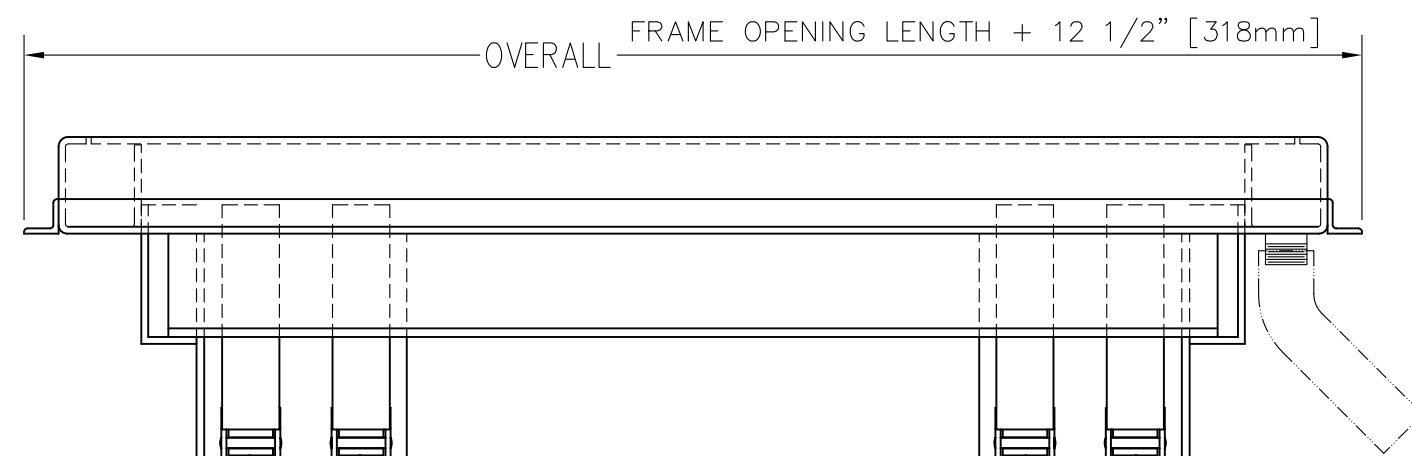


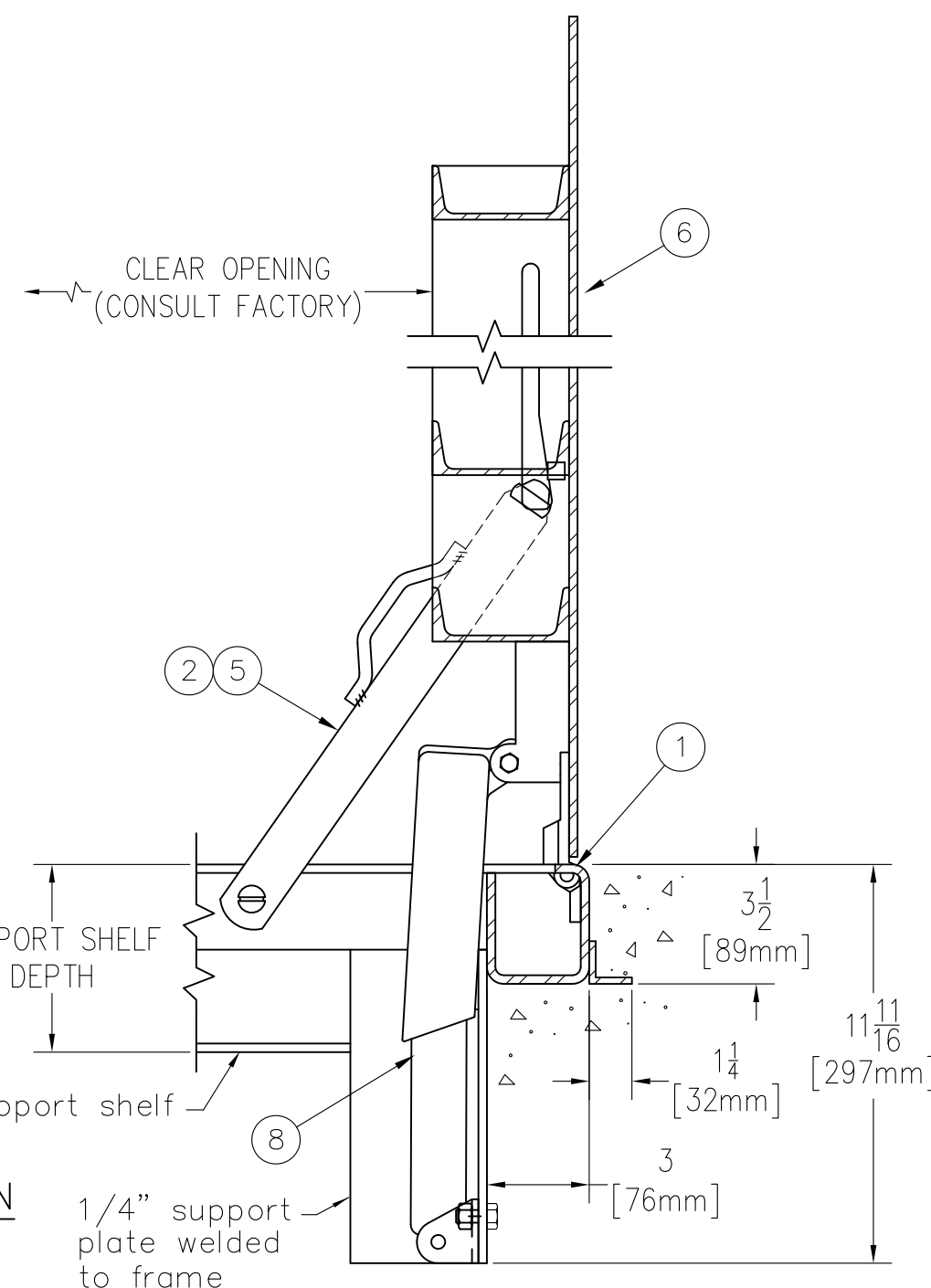
NOTE:
DESIGNED TO WITHSTAND H-20 WHEEL
LOADINGS SUITABLE FOR USE IN OFF-
STREET LOCATIONS WHERE NOT SUBJECTED
TO HIGH DENSITY TRAFFIC



CHANNEL SUPPORT SHELF MUST
BE SUPPORTED BY CONCRETE OR
STEEL TO CARRY H-20 LOADING



SECTION



SPECIFICATIONS

1. heavy duty forged brass hinges with stainless steel pins
2. Guide arm (if req'd)
3. 1-1/2" drain coupling
4. Standard slam lock
5. automatic hold open arm w/ red vinyl grip
6. 1/4" steel diamond pattern plate cover
7. 1/4" steel channel frame with welded 1 1/4" x 1 1/4" anchor flange
8. Lifting mechanism with reinforced composite tubes and compression springs

SHOP FINISH:

STEEL: RED OXIDE PRIMER

HARDWARE: ZINC PLATED & CHROMATE SEALED
(unless otherwise specified)

REINFORCED FOR H2O LOADING

INSTALLER NOTES:

- A. Use caution. Cover is spring loaded. Do not remove safety shipping bolt until unit is to be installed and in normal horizontal operating position.
- B. Be sure unit is set on slight pitch toward drain corner.
- C. Before anchoring in place open and close door. Check to see that the door in the closed position rests on the frame all around. If not, shim under the frame at the proper corner.
- D. Do not reduce 1 1/2" drain pipe to dry well or disposal system.

Customer:

P.O. N°

Job:

Sales Rep:



www.BestAccessDoors.ca
Fax: 1-888-828-6021
Phone: 1-800-483-0823
Email: info@BestAccessDoors.ca

SINGLE LEAF ACCESS DOOR TYPE J-H20 - EXTERIOR

QTY	TYPE	SIZE WIDTH x LENGTH	SHELF DEPTH
<input type="checkbox"/>	J-1H20	2'-0" x 2'-0" [610mm] x [610mm]	4 1/2" [114mm]
<input type="checkbox"/>	J-2H20	2'-6" x 2'-6" [762mm] x [762mm]	4 1/2" [114mm]
<input type="checkbox"/>	J-3H20	3'-0" x 2'-6" [914mm] x [762mm]	4 1/2" [114mm]
<input type="checkbox"/>	J-4H20	3'-0" x 3'-0" [914mm] x [914mm]	5 1/2" [140mm]
<input type="checkbox"/>	J-5H20	3'-6" x 3'-6" [1065mm] x [1065mm]	5 1/2" [140mm]