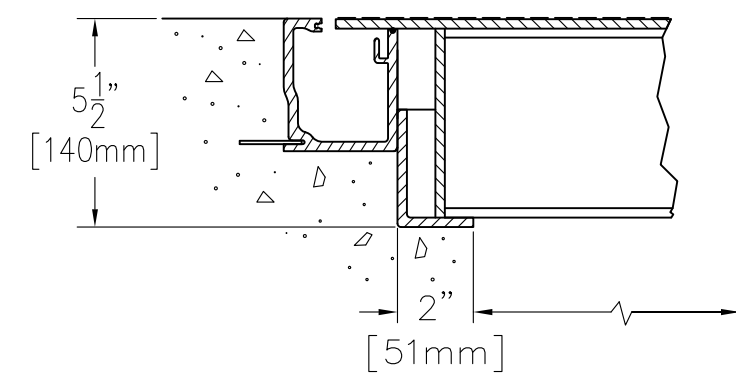
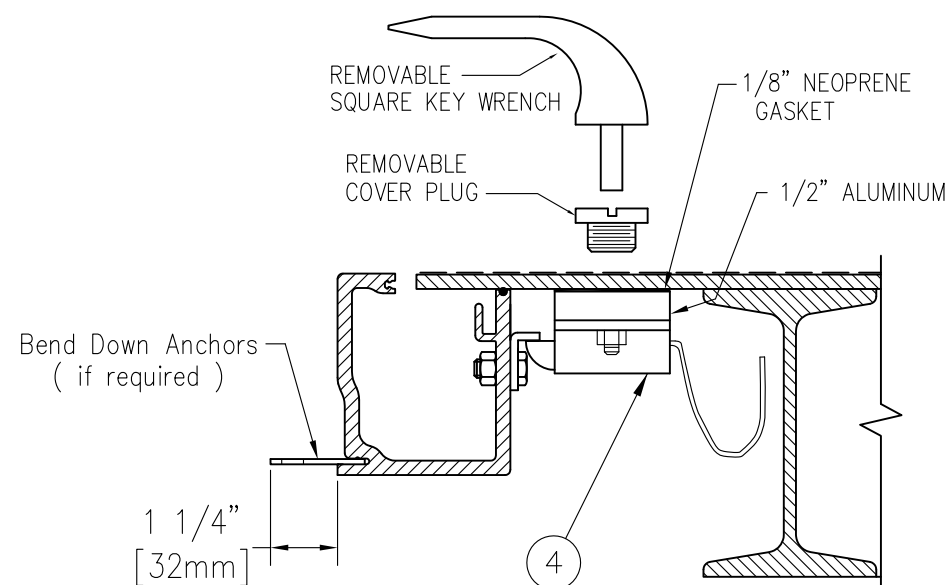
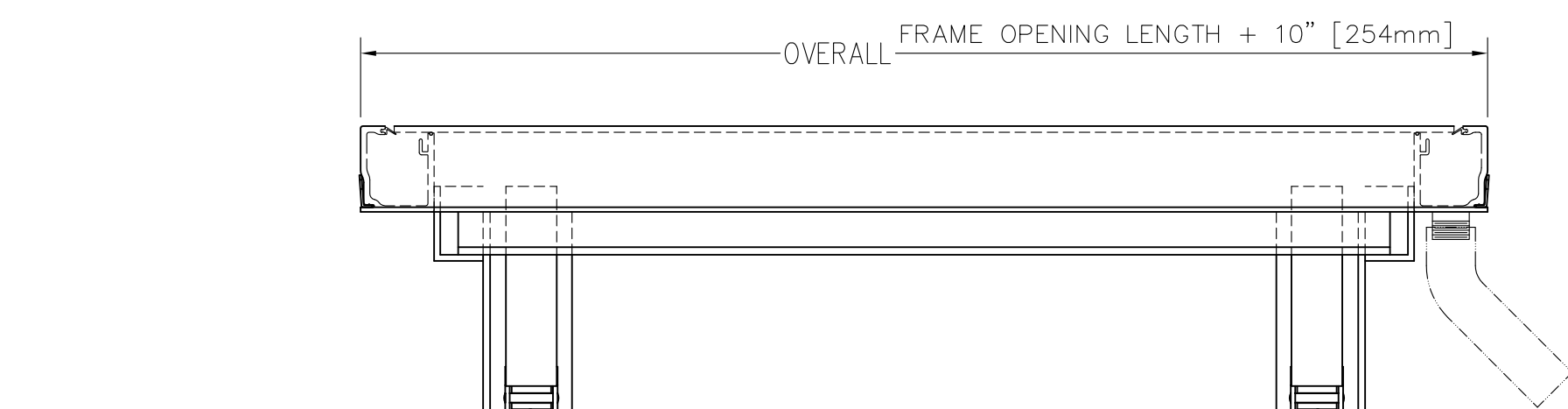


NOTE:
DESIGNED TO WITHSTAND H-20 WHEEL
LOADINGS SUITABLE FOR USE IN OFF-
STREET LOCATIONS WHERE NOT SUBJECTED
TO HIGH DENSITY TRAFFIC

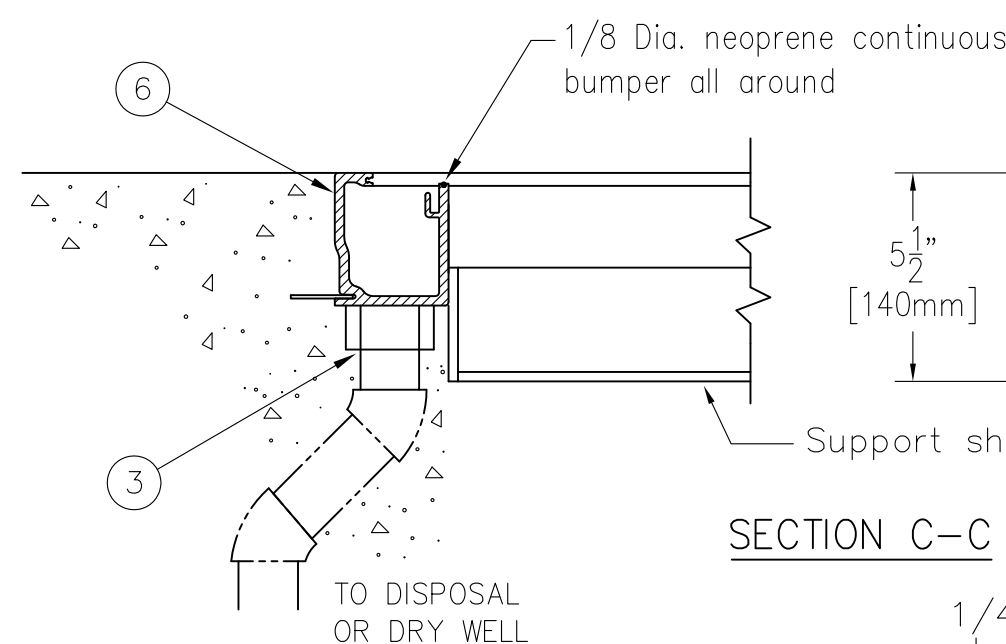


CHANNEL SUPPORT SHELF MUST
BE SUPPORTED BY CONCRETE OR
STEEL TO CARRY H-20 LOADING

SECTION B-B



SECTION A-A



SECTION C-C

CLEAR OPENING
FRAME OPENING WIDTH - 3 1/2" [89mm]

Frame areas that come
in contact with concrete
shall be coated with
bituminous paint

SPECIFICATIONS

- heavy duty forged stainless steel hinges with stainless steel pins
- automatic hold open arm
- 1-1/2" drain coupling
- Standard slam lock
- 1/4" aluminum diamond pattern plate cover
- 1/4" aluminum channel frame with recessed anchors
- Stainless steel spring lifting mechanism

SHOP FINISH:
ALUMINUM: MILL FINISH
HARDWARE: TYPE 316 STAINLESS STEEL
(unless otherwise specified)

REINFORCED FOR H20 LOADING

INSTALLER NOTES:

- Use caution. Cover is spring loaded. Do not remove safety shipping bolt until unit is to be installed and in normal horizontal operating position.
- Be sure unit is set on slight pitch toward drain corner.
- Before anchoring in place open and close door. Check to see that the door in the closed position rests on the frame all around. If not, shim under the frame at the proper corner.
- Do not reduce 1 1/2" drain pipe to dry well or disposal system.
- Bend down anchors if required

Customer:

P.O. N°

Job:

Sales Rep:



www.BestAccessDoors.ca
Fax: 1-888-828-6021
Phone: 1-800-483-0823
Email: info@BestAccessDoors.ca

SINGLE LEAF ACCESS DOOR TYPE J-ALH20 - EXTERIOR

QTY	TYPE	SIZE WIDTH x LENGTH
<input type="checkbox"/>	J-1ALH20	2'-0" x 2'-0" [610mm] x [610mm]
<input type="checkbox"/>	J-2ALH20	2'-6" x 2'-6" [762mm] x [762mm]
<input type="checkbox"/>	J-3ALH20	3'-0" x 2'-6" [914mm] x [762mm]
<input type="checkbox"/>	J-4ALH20	3'-0" x 3'-0" [914mm] x [914mm]
<input type="checkbox"/>	J-5ALH20	3'-6" x 3'-6" [1065mm] x [1065mm]