

# BA-FT-8080

## FLOOR DOOR, Non Hinged

### Panel Recessed 1/8" for Vinyl Tile/Carpet

#### Application

- Designed for interior and exterior applications that require an access opening that will blend in with the surrounding floor material

#### Product Features

- To keep the floor material from cracking or chipping within the door panel, the securing screws are located in the flange of the mounting frame
- FT-8080: Recessed 1/8" to accommodate carpeting and vinyl tile
- FT-8080-1: Recessed 1" to accommodate ceramic tile/concrete

#### FT-8080 Floor Door Specifications:

Material: Aluminum

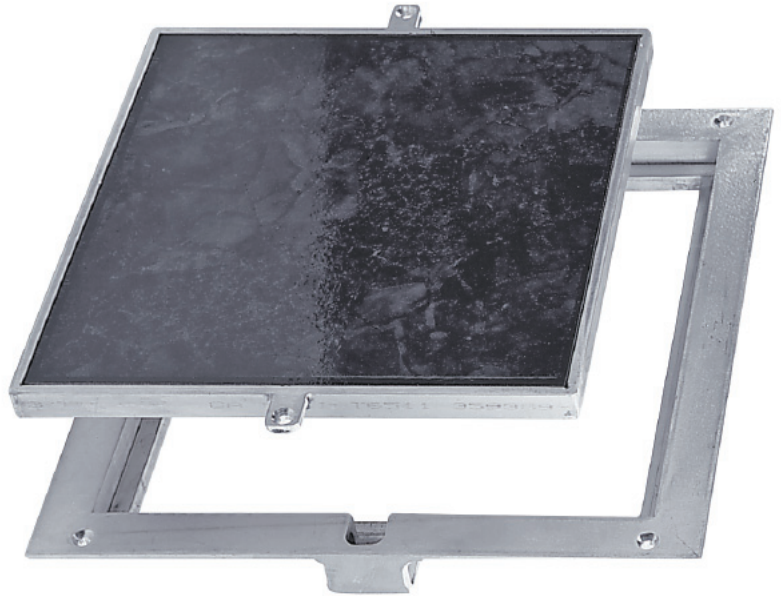
Door FT-8080: 1/4" smooth aluminum plate reinforced for live load of 150 lb/sq. ft., recessed 1/8" for carpet/vinyl tile

Door FT-8080-1: 1/4" smooth aluminum plate reinforced for live loads of 150 lb/sq.ft. / recessed 1" for ceramic tile/concrete

Frame: 1-1/2" x 1-1/4" aluminum angle with mounting holes in top flange

Standard Latch: Door panel is secured to frame with 1/4" x 1" flat head screws

Finish: Mill finish

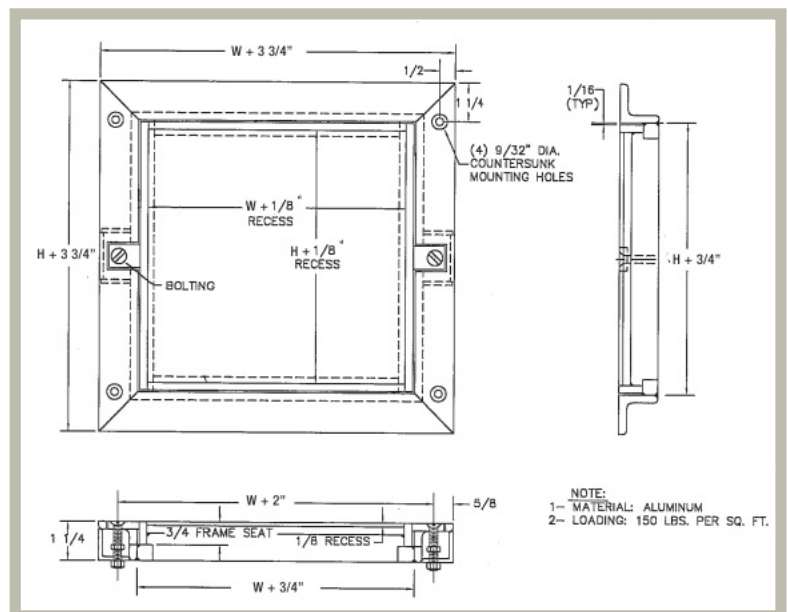


#### STANDARD SIZES

(other sizes available upon request)

Nominal Door Size W&H		Weight per Door	
inches	mm	lbs.	kg.
8 x 8	203 x 203	6	2.7
12 x 12	305 x 305	9	4.1
18 x 18	457 x 457	18	8.2
24 x 24	610 x 610	36	16.3

For detailed specifications see submittal sheet



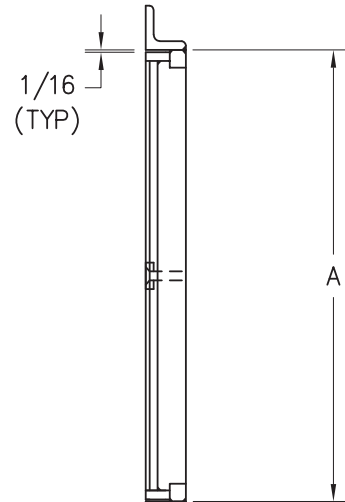
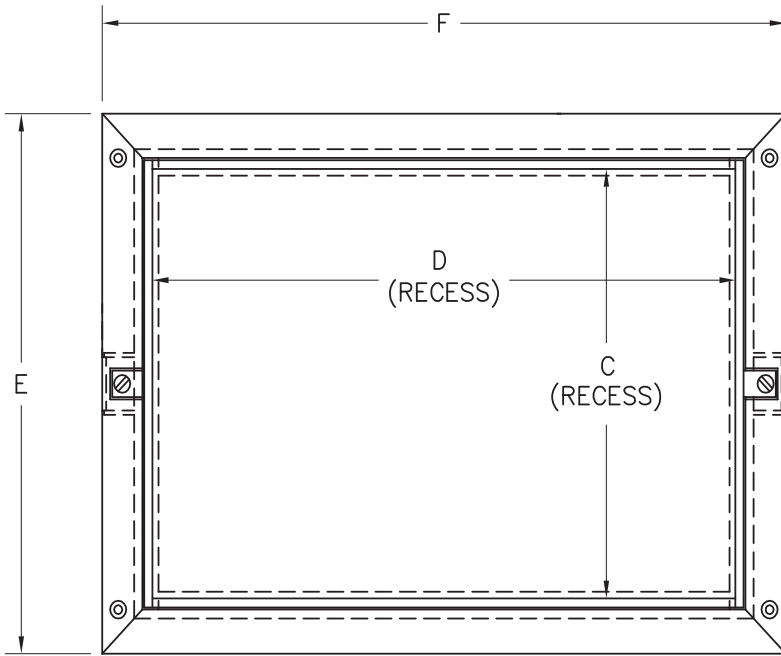


For more information, contact  
 BestAccessDoors  
 Phone: 1-800-483-0823  
 Fax: 1-888-828-6021  
 Email: info@BestAccessDoors.ca

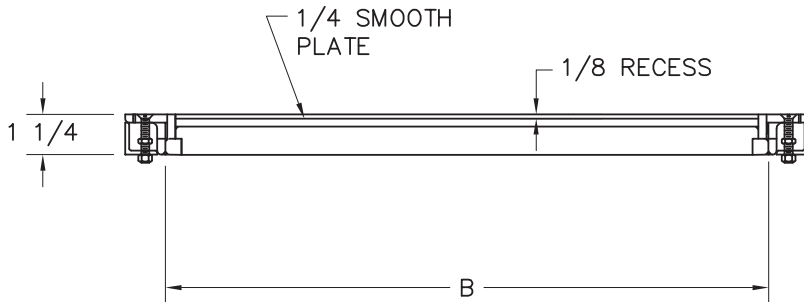
# BA-FT-8080

## NON-HINGED PANEL RECESSED 1/8" FOR VINYL TILE/CARPET

NOMINAL DOOR SIZE	FRAME I.D.		RECEIVING AREA		OVERALL SIZE		WEIGHT
	in. (mm)	A in. (mm)	B in. (mm)	C in. (mm)	D in. (mm)	E in. (mm)	
8 x 8	8-3/4 (222)	8-3/4 (222)	8.125 (206)	8.125 (206)	11.250 (286)	11.250 (286)	6 (3)
12 x 12	12-3/4 (324)	12-3/4 (324)	12.125 (308)	12.125 (308)	15.250 (387)	15.250 (387)	9 (4)
18 x 18	18-3/4 (476)	18-3/4 (476)	18.125 (460)	18.125 (460)	21.250 (540)	21.250 (540)	18 (8)
24 x 24	24-3/4 (629)	24-3/4 (629)	24.125 (613)	24.125 (613)	27.250 (692)	27.250 (692)	36 (16)

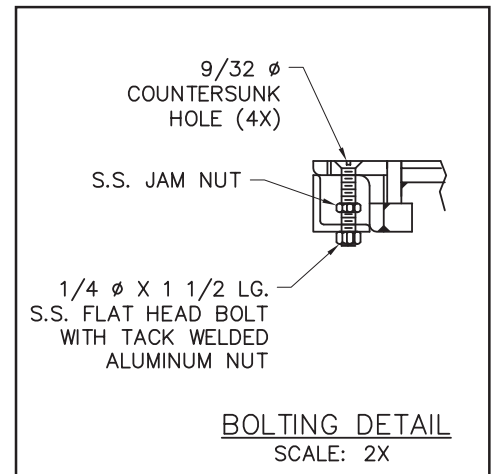


1-1/4 x 1-1/4 x 1/4  
 ALUMINUM FRAME



**NOTES:**

- 1- MATERIAL: ALUMINUM
- 2- LOADING: 150 LBS. PER SQ. FT.
- 3- 316 STAINLESS STEEL NUTS & BOLTS



JOB NAME:  
 CUSTOMER:

APPROVED BY:  
 DATE: