



**Quality Access Doors - FAST !**



# Floor Door Recessed 1/8" for Vinyl Tile/Carpet

## BA-FT-8040

### Application

- Designed for interior and exterior applications that require an access opening that will blend in with the surrounding floor material

### Product Features

- Recessed 1/8" to accommodate carpeting and vinyl tile.
- Door panel is equipped with a flush aluminum drop handle and an automatic hold open arm

### BA-FT-8040 Floor Door Specifications:

**Material:** Aluminum door and frame

**Door:** 1/4" smooth aluminum plate reinforced for live load of 150 pounds/sq. ft.

Extruded edging is welded to door panel, providing a 1/8" recess

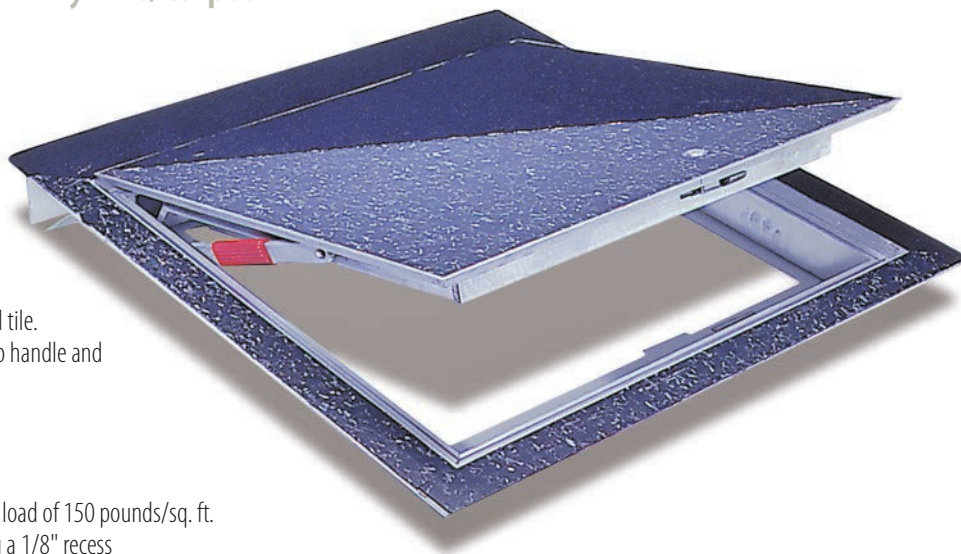
**Frame:** Angle frame fabricated from aluminum extrusion with integral 1" anchor flange on three sides and welded anchor straps on the hinge side

**Hinge:** Extruded aluminum hinges are welded to inside of door panel and pivot on stainless steel pins. Hold open arm with red Vinyl grip allow automatic opening

**Opening Device:** Door panel to open to 90 degrees, locking door in open position, and allowing for easy control when closing door panel. Stainless steel torsion bars provide lift assistance

**Standard Latch:** Stainless steel slamlock with a fixed inside handle, removable outside handle, and removable threaded plug

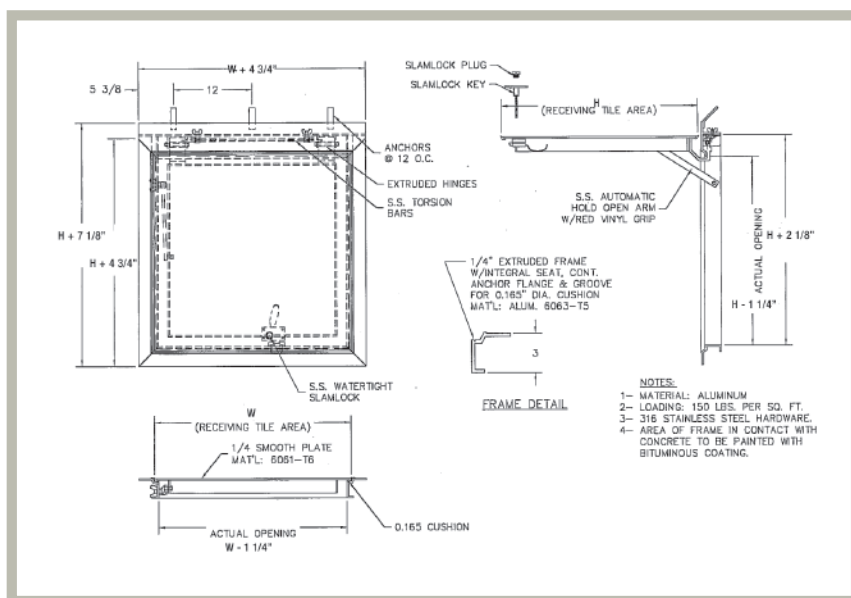
**Finish:** Mill finish with bituminous coating applied to exterior of frame



### AVAILABLE SIZES (Special sizes available upon request)

NOMINAL DOOR SIZE W X H		WEIGHT PER DOOR	
inches	mm	lbs.	kg.
24 X 24	610 X 610	45	20.5
24 X 30	610 X 762	55	25
24 X 36	610 X 914	60	27.2
30 X 30	762 X 762	60	27.2
30 X 36	762 X 914	70	31.8
36 X 36	914 X 914	75	34
42 X 42	1067 X 1067	100	45.4
48 X 48*	1220 X 1220	155	70.4
48 X 72*	1220 X 1829	220	99.9
60 X 60*	1524 X 1524	225	102.2
*Double Leaf			

For detailed specifications see submittal sheet



For more information, contact Best Access Doors

[www.BestAccessDoors.ca](http://www.BestAccessDoors.ca)

Phone: 1-800-483-0823

Fax: 1-888-828-6021

Email: [info@BestAccessDoors.ca](mailto:info@BestAccessDoors.ca)