



Quality Access Doors - FAST !



RECESSED ACCESS DOOR BA-DW-5015

Application

- For installation in drywall surfaces when it is required to conceal the door panel

Product Features

- Recessed 5/8" to receive drywall
- Door flange is a textured galvanized steel tapping bead with pre-punched holes

BA-DW-5015 Access Door Specifications:

Material: Steel or Stainless Steel: 22 gage door, 22 gage mounting frame

Door: Recessed 5/8"

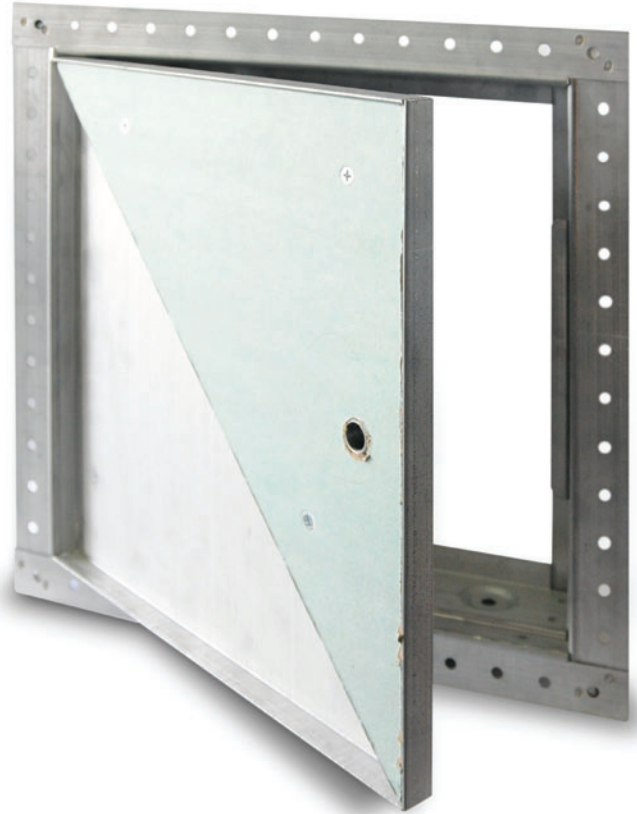
Door Frame: Galvanized steel drywall tapping bead on all sides

Hinge: Concealed

Standard Latch: Slotted screwdriver cam latch

Optional Latches/Locks: Cylinder lock and key, allen head cam latch, spanner head cam latch

Finish: Satin coat steel



AVAILABLE SIZES *(Special sizes available upon request)*

NOMINAL DOOR SIZE W X H		WEIGHT PER DOOR		
inches	mm	Latches	lbs.	kg.
12 X 12	305 X 305	1	8.5	3.9
18 X 18	457 X 457	2	15	6.8
24 X 24	610 X 610	2	23	10.4
24 X 36	610 X 914	4	30	13.8

Wall or ceiling opening is W + 3/8" (9 mm)
For detailed specifications see submittal sheet

